

Transthyretin/TTR Antibody, Rabbit PAb, Antigen Affinity Purified



Sino Biological
Biological Solution Specialist

Catalog Number: 201630-T10

GENERAL INFORMATION

| | |
|---------------------------|--|
| Immunogen: | E. coli-derived Human Transthyretin/TTR fragment |
| Preparation | Produced in rabbits immunized with E. coli-derived Human Transthyretin/TTR fragment, and purified by antigen affinity chromatography. |
| Ig Type: | Rabbit IgG |
| Specificity: | Human Transthyretin/TTR |
| Formulation: | PBS, pH7.0 with 0.03% Proclin300 |
| Storage: | This antibody can be stored at 2°C-8°C for one month without detectable loss of activity. Antibody products are stable for twelve months from date of receipt when stored at -20°C to -80°C. Preservative-Free. Avoid repeated freeze-thaw cycles. |
| Alternative Names: | CTS,CTS1,HEL111,HsT2651,PALB,TBPA |

APPLICATIONS

| | |
|----------------------|--------------|
| Applications: | IHC-P,ICC/IF |
|----------------------|--------------|

RECOMMENDED CONCENTRATION

| | |
|---------------|---------------------|
| IHC-P | IHC-P: 1:300-1:2000 |
| ICC/IF | ICC/IF: 1:100-1:500 |

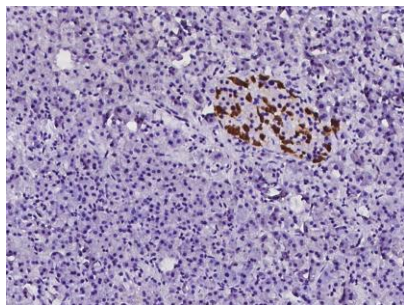
Please Note: Optimal concentrations/dilutions should be determined by the end user.

Transthyretin/TTR Antibody, Rabbit PAb, Antigen Affinity Purified

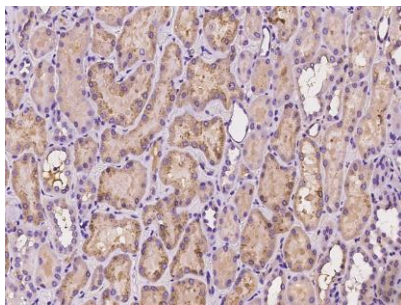


Sino Biological
Biological Solution Specialist

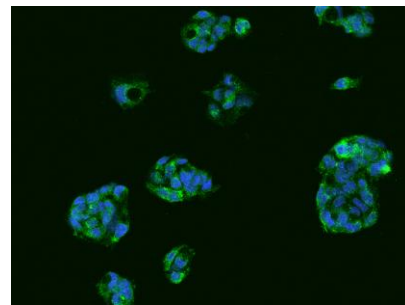
Catalog Number: 201630-T10



Immunohistochemical staining of human TTR in human pancreas with rabbit polyclonal antibody at 1:1000 dilution, formalin-fixed paraffin embedded sections.



Immunohistochemical staining of human TTR in human kidney with rabbit polyclonal antibody at 1:500 dilution, formalin-fixed paraffin embedded sections.



Immunofluorescence staining of TTR in HepG2 cells. Cells were fixed with 4% PFA, permeabilized with 0.1% Triton X-100 in PBS, blocked with 10% serum, and incubated with rabbit anti-Human TTR polyclonal antibody (dilution ratio 1:200) at 4°C overnight. Then cells were stained with the Alexa Fluor®488-conjugated Goat Anti-rabbit IgG secondary antibody (green) and counterstained with DAPI (blue). Positive staining was localized to Cytoplasm.