

# CSRP2 Antibody, Rabbit PAb, Antigen Affinity Purified



Sino Biological  
Biological Solution Specialist

Catalog Number: 201848-T40

## GENERAL INFORMATION

<b>Immunogen:</b>	E. coli-derived Human CSRP2 fragment
<b>Preparation</b>	Produced in rabbits immunized with E. coli-derived Human CSRP2 fragment, and purified by antigen affinity chromatography.
<b>Ig Type:</b>	Rabbit IgG
<b>Specificity:</b>	Human CSRP2
<b>Formulation:</b>	PBS, pH7.0 with 0.03% Proclin300
<b>Storage:</b>	This antibody can be stored at 2°C-8°C for one month without detectable loss of activity. Antibody products are stable for twelve months from date of receipt when stored at -20°C to -80°C. Avoid repeated freeze-thaw cycles.
<b>Alternative Names:</b>	CSRP2

## APPLICATIONS

<b>Applications:</b>	WB, IHC-P
----------------------	-----------

## RECOMMENDED CONCENTRATION

<b>IHC-P</b>	IHC-P: 1:50-1:200
<b>Western Blot</b>	WB: 1:500-1:2000

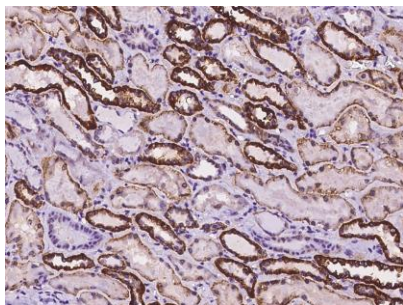
***Please Note: Optimal concentrations/dilutions should be determined by the end user.***

# CSRP2 Antibody, Rabbit PAb, Antigen Affinity Purified

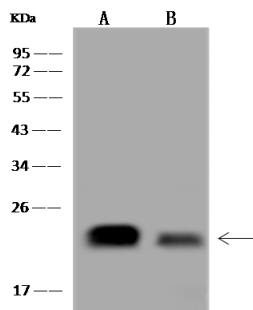
Catalog Number: 201848-T40



Sino Biological  
Biological Solution Specialist



Immunohistochemical staining of human CSRP2 in human kidney with rabbit polyclonal antibody at 1:100 dilution, formalin-fixed paraffin embedded sections.



Anti-CSRP2 rabbit polyclonal antibody at 1:500 dilution

Lane A: SH-SY5Y Whole Cell Lysate

Lane B: HEK293 Whole Cell Lysate

Lysates/proteins at 30 µg per lane.

Secondary

Goat Anti-Rabbit IgG (H+L)/HRP at 1/10000 dilution.

Developed using the ECL technique.

Performed under reducing conditions.

Predicted band size: 21 kDa

Observed band size: 21 kDa