

MRPS26 Antibody, Rabbit PAb, Antigen Affinity Purified



Sino Biological
Biological Solution Specialist

Catalog Number: 202098-T46

GENERAL INFORMATION

Immunogen:	E. coli-derived Human MRPS26 fragment
Preparation	Produced in rabbits immunized with E. coli-derived Human MRPS26 fragment, and purified by antigen affinity chromatography.
Ig Type:	Rabbit IgG
Specificity:	Human MRPS26
Formulation:	PBS, pH7.0 with 0.03% Proclin300
Storage:	This antibody can be stored at 2°C-8°C for one month without detectable loss of activity. Antibody products are stable for twelve months from date of receipt when stored at -20°C to -80°C. Preservative-Free. Avoid repeated freeze-thaw cycles.
Alternative Names:	C20orf193,dJ534B8.3,GI008,MRP-S13,MRP-S26,MRPS13,NY-BR-87,RPMS13

APPLICATIONS

Applications:	WB,IHC-P,ICC/IF,IP
----------------------	--------------------

RECOMMENDED CONCENTRATION

IHC-P	IHC-P: 1:100-1:400
ICC/IF	ICC/IF: 1:100-1:500
Western Blot	WB: 1:500-1:2000
Immunoprecipitation	IP:1-5μL/mg of lysate

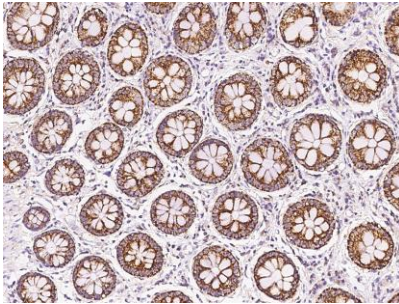
Please Note: Optimal concentrations/dilutions should be determined by the end user.

MRPS26 Antibody, Rabbit PAb, Antigen Affinity Purified

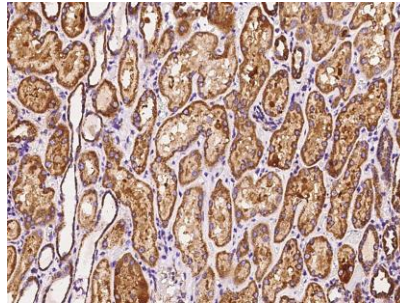


Sino Biological
Biological Solution Specialist

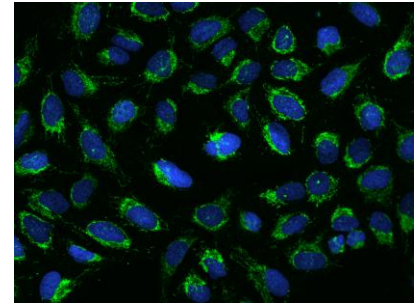
Catalog Number: 202098-T46



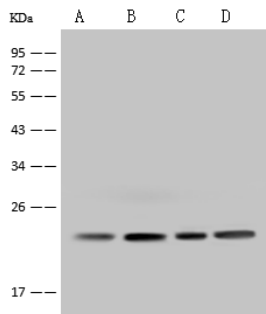
Immunohistochemical staining of human MRPS26 in human colon with rabbit polyclonal antibody at 1:200 dilution, formalin-fixed paraffin embedded sections.



Immunohistochemical staining of human MRPS26 in human kidney with rabbit polyclonal antibody at 1:200 dilution, formalin-fixed paraffin embedded sections.



Immunofluorescence staining of MRPS26 in U2OS cells. Cells were fixed with 4% PFA, permeabilized with 0.1% Triton X-100 in PBS, blocked with 10% serum, and incubated with rabbit anti-Human MRPS26 polyclonal antibody (dilution ratio 1:200) at 4°C overnight. Then cells were stained with the Alexa Fluor®488-conjugated Goat Anti-rabbit IgG secondary antibody (green) and counterstained with DAPI (blue). Positive staining was localized to Cytoplasm.



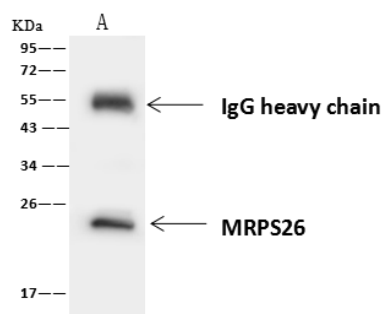
Anti-MRPS26 rabbit polyclonal antibody at 1:500 dilution
Lane A: U 251 MG, HepG2 Whole Cell Lysate
Lane B: HeLa Whole Cell Lysate
Lane C: Raji Whole Cell Lysate

Lysates/proteins at 30 µg per lane.

Secondary
Goat Anti-Rabbit IgG (H+L)/HRP at 1/10000 dilution.

Developed using the ECL technique. Performed under reducing conditions.

Predicted band size: 24 kDa
Observed band size: 24 kDa



MRPS26 was immunoprecipitated using:
Lane A: 0.5 mg HepG2 Whole Cell Lysate

4 µL anti-MRPS26 rabbit polyclonal antibody and 60 µg of Immunomagnetic beads Protein A/G. Primary antibody:

Anti-MRPS26 rabbit polyclonal antibody, at 1:100 dilution

Secondary antibody:
Goat Anti-Rabbit IgG (H+L)/HRP at 1/10001 dilution

Developed using the ECL technique. Performed under reducing conditions.

Predicted band size: 24 kDa
Observed band size: 24 kDa

Manufactured By Sino Biological Inc., FOR RESEARCH USE ONLY. NOT FOR USE IN HUMANS.

Tel: 215-583-7898 (US); +86-400-890-9989 (Global) •

<http://www.sinobiological.com>