

# EAF2 Antibody, Rabbit PAb, Antigen Affinity Purified



Sino Biological  
Biological Solution Specialist

Catalog Number: 202579-T40

## GENERAL INFORMATION

Immunogen:	E. coli-derived Human EAF2 fragment
Preparation	Produced in rabbits immunized with E. coli-derived Human EAF2 fragment, and purified by antigen affinity chromatography.
Ig Type:	Rabbit IgG
Specificity:	Human EAF2
Formulation:	PBS, pH7.0 with 0.03% Proclin300
Storage:	This antibody can be stored at 2°C-8°C for one month without detectable loss of activity. Antibody products are stable for twelve months from date of receipt when stored at -20°C to -80°C. Avoid repeated freeze-thaw cycles.

## APPLICATIONS

Applications:	WB, IHC-P
---------------	-----------

## RECOMMENDED CONCENTRATION

IHC-P	IHC-P: 1:100-1:400
Western Blot	WB: 1:500-1:2000

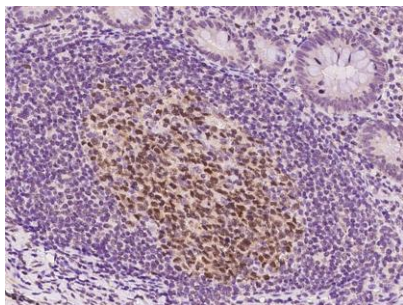
**Please Note:** Optimal concentrations/dilutions should be determined by the end user.

# EAF2 Antibody, Rabbit PAb, Antigen Affinity Purified

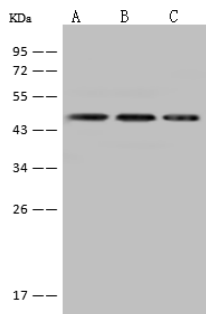
Catalog Number: 202579-T40



Sino Biological  
Biological Solution Specialist



Immunohistochemical staining of human EAF2 in human appendix with rabbit polyclonal antibody at 1:200 dilution, formalin-fixed paraffin embedded sections.



Anti-EAF2 rabbit polyclonal antibody at 1:500 dilution

Lane A: HepG2 Whole Cell Lysate

Lane B: A431 Whole Cell Lysate

Lane C: 293T Whole Cell Lysate

Lysates/proteins at 30 µg per lane.

Secondary

Goat Anti-Rabbit IgG (H+L)/HRP at 1/10000 dilution.

Developed using the ECL technique.

Performed under reducing conditions.

Predicted band size: 29 kDa

Observed band size: 45 kDa