

RPL9 Antibody, Rabbit PAb, Antigen Affinity Purified



Sino Biological
Biological Solution Specialist

Catalog Number: 202771-T46

GENERAL INFORMATION

Immunogen:	E. coli-derived Human RPL9 fragment
Preparation	Produced in rabbits immunized with E. coli-derived Human RPL9 fragment, and purified by antigen affinity chromatography.
Ig Type:	Rabbit IgG
Specificity:	Human RPL9
Formulation:	PBS, pH7.0 with 0.03% Proclin300
Storage:	This antibody can be stored at 2°C-8°C for one month without detectable loss of activity. Antibody products are stable for twelve months from date of receipt when stored at -20°C to -80°C. Preservative-Free. Avoid repeated freeze-thaw cycles.
Alternative Names:	L9,NPC-A-16

APPLICATIONS

Applications:	WB,IHC-P,ICC/IF,IP
---------------	--------------------

RECOMMENDED CONCENTRATION

IHC-P	IHC-P: 1:50-1:200
ICC/IF	ICC/IF: 1:100-1:500
Western Blot	WB: 1:500-1:2000
Immunoprecipitation	IP:1-5μL/mg of lysate

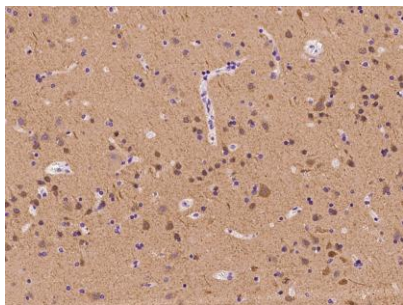
Please Note: Optimal concentrations/dilutions should be determined by the end user.

RPL9 Antibody, Rabbit PAb, Antigen Affinity Purified

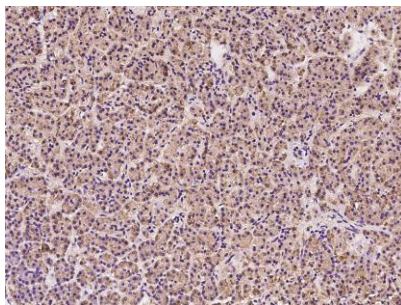


Sino Biological
Biological Solution Specialist

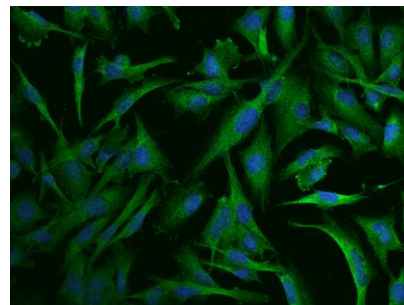
Catalog Number: 202771-T46



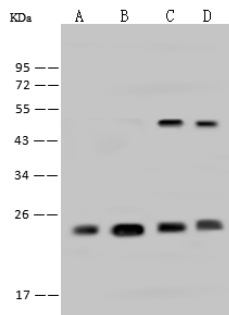
Immunohistochemical staining of human RPL9 in human brain with rabbit polyclonal antibody at 1:100 dilution, formalin-fixed paraffin embedded sections.



Immunohistochemical staining of human RPL9 in human pancreas with rabbit polyclonal antibody at 1:100 dilution, formalin-fixed paraffin embedded sections.



Immunofluorescence staining of RPL9 in U251MG cells. Cells were fixed with 4% PFA, permeabilized with 0.1% Triton X-100 in PBS, blocked with 10% serum, and incubated with rabbit anti-Human RPL9 polyclonal antibody (dilution ratio 1:200) at 4°C overnight. Then cells were stained with the Alexa Fluor®488-conjugated Goat Anti-rabbit IgG secondary antibody (green) and counterstained with DAPI (blue). Positive staining was localized to Cytoplasm.



Anti-RPL9 rabbit polyclonal antibody at 1:500 dilution

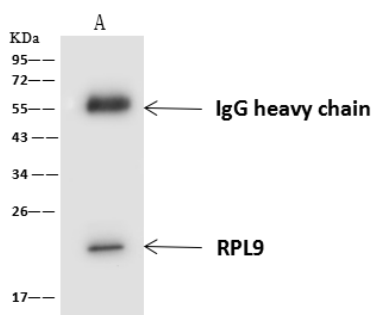
Lane A: HepG2 Whole Cell Lysate
Lane B: Hela Whole Cell Lysate
Lane C: SH-SY5Y Whole Cell Lysate
Lane D: Jurkat Whole Cell Lysate

Lysates/proteins at 30 µg per lane.

Secondary
Goat Anti-Rabbit IgG (H+L)/HRP at 1/10000 dilution.

Developed using the ECL technique. Performed under reducing conditions.

Predicted band size: 22 kDa
Observed band size: 22 kDa



RPL9 was immunoprecipitated using:
Lane A: 0.5 mg HeLa Whole Cell Lysate

4 µL anti-RPL9 rabbit polyclonal antibody and
60 µg of Immunomagnetic beads Protein
A/G. Primary antibody:

Anti-RPL9 rabbit polyclonal antibody, at 1:100 dilution

Secondary antibody:
Goat Anti-Rabbit IgG (H+L)/HRP at 1/10000 dilution

Developed using the ECL technique.
Performed under reducing conditions.

Predicted band size: 22 kDa
Observed band size: 22 kDa

Manufactured By Sino Biological Inc., FOR RESEARCH USE ONLY. NOT FOR USE IN HUMANS.

Tel: 215-583-7898 (US); +86-400-890-9989 (Global) •

<http://www.sinobiological.com>