

# RPS5 Antibody, Rabbit PAb, Antigen Affinity Purified



Sino Biological  
Biological Solution Specialist

Catalog Number: 202782-T46

## GENERAL INFORMATION

Immunogen:	E. coli-derived Human RPS5 fragment
Preparation	Produced in rabbits immunized with E. coli-derived Human RPS5 fragment, and purified by antigen affinity chromatography.
Ig Type:	Rabbit IgG
Specificity:	Human RPS5
Formulation:	PBS, pH7.0 with 0.03% Proclin300
Storage:	This antibody can be stored at 2°C-8°C for one month without detectable loss of activity. Antibody products are stable for twelve months from date of receipt when stored at -20°C to -80°C. Preservative-Free. Avoid repeated freeze-thaw cycles.
Alternative Names:	S5

## APPLICATIONS

Applications:	WB,IHC-P,ICC/IF,IP
---------------	--------------------

## RECOMMENDED CONCENTRATION

IHC-P	IHC-P: 1:100-1:500
ICC/IF	ICC/IF: 1:100-1:500
Western Blot	WB: 1:500-1:2000
Immunoprecipitation	IP:0.5-2μL/mg of lysate

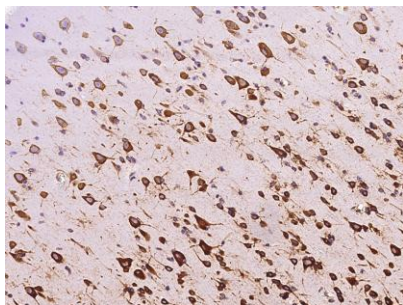
**Please Note: Optimal concentrations/dilutions should be determined by the end user.**

# RPS5 Antibody, Rabbit PAb, Antigen Affinity Purified

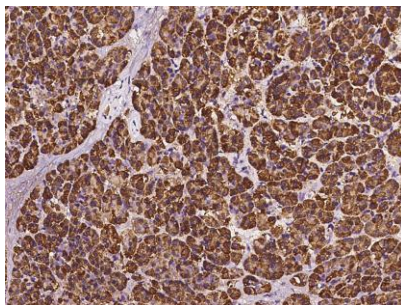


Sino Biological  
Biological Solution Specialist

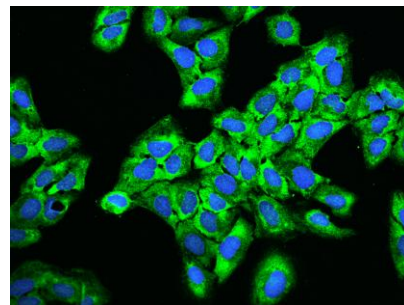
Catalog Number: 202782-T46



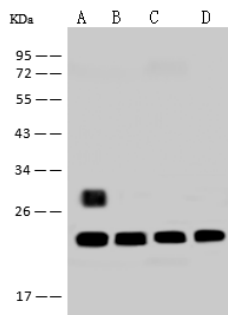
Immunohistochemical staining of human RPS5 in human brain with rabbit polyclonal antibody at 1:200 dilution, formalin-fixed paraffin embedded sections.



Immunohistochemical staining of human RPS5 in human pancreas with rabbit polyclonal antibody at 1:200 dilution, formalin-fixed paraffin embedded sections.



Immunofluorescence staining of RPS5 in U2OS cells. Cells were fixed with 4% PFA, permeabilized with 0.1% Triton X-100 in PBS, blocked with 10% serum, and incubated with rabbit anti-Human RPS5 polyclonal antibody (dilution ratio 1:200) at 4°C overnight. Then cells were stained with the Alexa Fluor®488-conjugated Goat Anti-rabbit IgG secondary antibody (green) and counterstained with DAPI (blue). Positive staining was localized to Cytoplasm.



Anti-RPS5 rabbit polyclonal antibody at 1:500 dilution

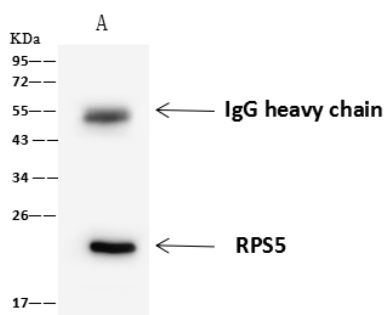
Lane A: 293T Whole Cell Lysate  
Lane B: HeLa Whole Cell Lysate  
Lane C: Jurkat Whole Cell Lysate  
Lane D: HepG2 Whole Cell Lysate

Lysates/proteins at 30 µg per lane.

Secondary  
Goat Anti-Rabbit IgG (H+L)/HRP at 1/10000 dilution.

Developed using the ECL technique. Performed under reducing conditions.

Predicted band size: 23 kDa  
Observed band size: 23 kDa  
(We are unsure as to the identity of these extra bands.)



RPS5 was immunoprecipitated using:  
Lane A: 0.5 mg 293T Whole Cell Lysate

4 µL anti-RPS5 rabbit polyclonal antibody and  
60 µg of Immunomagnetic beads Protein  
A/G. Primary antibody:

Anti-RPS5 rabbit polyclonal antibody, at 1:100 dilution

Secondary antibody:  
Goat Anti-Rabbit IgG (H+L)/HRP at 1/10000 dilution

Developed using the ECL technique.  
Performed under reducing conditions.

Predicted band size: 23 kDa  
Observed band size: 23 kDa

Manufactured By Sino Biological Inc., FOR RESEARCH USE ONLY. NOT FOR USE IN HUMANS.

Tel: 215-583-7898 (US); +86-400-890-9989 (Global) •

<http://www.sinobiological.com>