

SEC14L1 Antibody, Rabbit PAb, Antigen Affinity Purified



Sino Biological
Biological Solution Specialist

Catalog Number: 202860-T36

GENERAL INFORMATION

Immunogen:	E. coli-derived Human SEC14L1 fragment
Preparation	Produced in rabbits immunized with E. coli-derived Human SEC14L1 fragment, and purified by antigen affinity chromatography.
Ig Type:	Rabbit IgG
Specificity:	Human SEC14L1
Formulation:	PBS, pH7.0 with 0.03% Proclin300
Storage:	This antibody can be stored at 2°C-8°C for one month without detectable loss of activity. Antibody products are stable for twelve months from date of receipt when stored at -20°C to -80°C. Avoid repeated freeze-thaw cycles.

APPLICATIONS

Applications:	WB, IP
---------------	--------

RECOMMENDED CONCENTRATION

Western Blot	WB: 1:500-1:1000
Immunoprecipitation	IP:0.2-1µL/mg of lysate

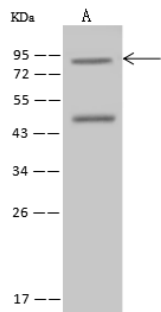
Please Note: Optimal concentrations/dilutions should be determined by the end user.

SEC14L1 Antibody, Rabbit PAb, Antigen Affinity Purified



Sino Biological
Biological Solution Specialist

Catalog Number: 202860-T36



Anti-SEC14L1 rabbit polyclonal antibody at 1:500 dilution

Lane A: Jurkat Whole Cell Lysate

Lysates/proteins at 30 µg per lane.

Secondary

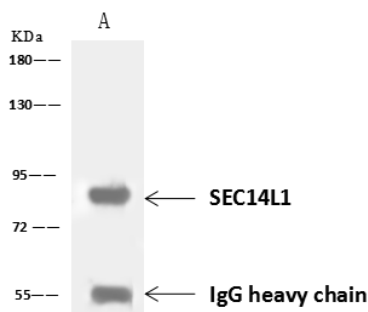
Goat Anti-Rabbit IgG (H+L)/HRP at 1/10000 dilution.

Developed using the ECL technique.

Performed under reducing conditions.

Predicted band size: 81 kDa

Observed band size: 81 kDa



SEC14L1 was immunoprecipitated using:
Lane A: 0.5 mg Jurkat Whole Cell Lysate

1 µL anti-SEC14L1 rabbit polyclonal antibody
and 60 µg of Immunomagnetic beads Protein A/G.

Primary antibody:

Anti-SEC14L1 rabbit polyclonal antibody, at 1:500 dilution

Secondary antibody:

Goat Anti-Rabbit IgG (H+L)/HRP at 1/10000 dilution

Developed using the ECL technique.

Performed under reducing conditions.

Predicted band size: 81 kDa

Observed band size: 81 kDa