

SRM Antibody, Rabbit PAb, Antigen Affinity Purified



Sino Biological
Biological Solution Specialist

Catalog Number: 202910-T44

GENERAL INFORMATION

Immunogen:	E. coli-derived Human SRM fragment
Preparation	Produced in rabbits immunized with E. coli-derived Human SRM fragment, and purified by antigen affinity chromatography.
Ig Type:	Rabbit IgG
Specificity:	Human SRM
Formulation:	PBS, pH7.0 with 0.03% Proclin300
Storage:	This antibody can be stored at 2°C-8°C for one month without detectable loss of activity. Antibody products are stable for twelve months from date of receipt when stored at -20°C to -80°C. Avoid repeated freeze-thaw cycles.

APPLICATIONS

Applications:	WB,IHC-P,IP
---------------	-------------

RECOMMENDED CONCENTRATION

IHC-P	IHC-P: 1:200-1:1000
Western Blot	WB: 1:500-1:2000
Immunoprecipitation	IP:5-10 µL/mg of lysate

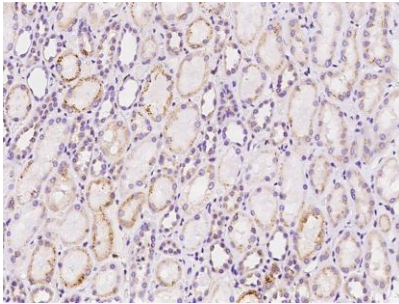
Please Note: Optimal concentrations/dilutions should be determined by the end user.

SRM Antibody, Rabbit PAb, Antigen Affinity Purified

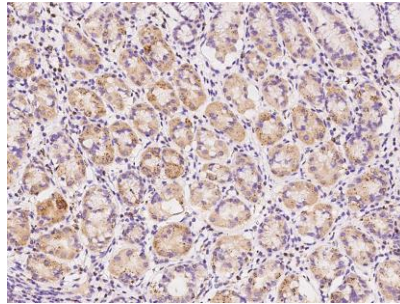


Sino Biological
Biological Solution Specialist

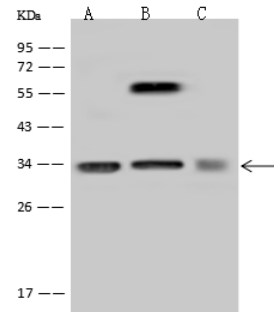
Catalog Number: 202910-T44



Immunohistochemical staining of human SRM in human kidney with rabbit polyclonal antibody at 1:500 dilution, formalin-fixed paraffin embedded sections.



Immunohistochemical staining of human SRM in human stomach with rabbit polyclonal antibody at 1:500 dilution, formalin-fixed paraffin embedded sections.



Anti-SRM rabbit polyclonal antibody at 1:500 dilution

Lane A: Hela Whole Cell Lysate

Lane B: Jurkat Whole Cell Lysate

Lane C: K562 Whole Cell Lysate

Lysates/proteins at 30 µg per lane.

Secondary

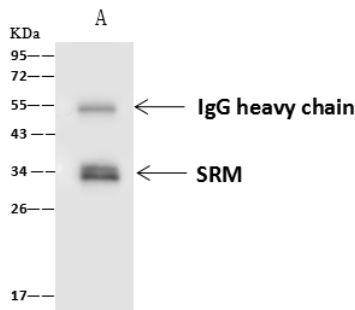
Goat Anti-Rabbit IgG (H+L)/HRP at 1/10000 dilution.

Developed using the ECL technique.

Performed under reducing conditions.

Predicted band size: 34 kDa

Observed band size: 34 kDa



SRM was immunoprecipitated using:

Lane A: 0.5 mg HeLa Whole Cell Lysate

4 µL anti-SRM rabbit polyclonal antibody and
60 µg of Immunomagnetic beads Protein A/G.

Primary antibody:

Anti-SRM rabbit polyclonal antibody, at 1:100 dilution

Secondary antibody:

Goat Anti-Rabbit IgG (H+L)/HRP at 1/10000 dilution

Developed using the ECL technique.

Performed under reducing conditions.

Predicted band size: 34 kDa

Observed band size: 34 kDa

Manufactured By Sino Biological Inc., FOR RESEARCH USE ONLY. NOT FOR USE IN HUMANS.

Tel: 215-583-7898 (US); +86-400-890-9989(Global) •

<http://www.sinobiological.com>