

# HIGD1A Antibody, Rabbit PAb, Antigen Affinity Purified



Sino Biological  
Biological Solution Specialist

Catalog Number: 203185-T44

## GENERAL INFORMATION

<b>Immunogen:</b>	E. coli-derived Human HIGD1A fragment
<b>Preparation</b>	Produced in rabbits immunized with E. coli-derived Human HIGD1A fragment, and purified by antigen affinity chromatography.
<b>Ig Type:</b>	Rabbit IgG
<b>Specificity:</b>	Human HIGD1A
<b>Formulation:</b>	PBS, pH7.0 with 0.03% Proclin300
<b>Storage:</b>	This antibody can be stored at 2°C-8°C for one month without detectable loss of activity. Antibody products are stable for twelve months from date of receipt when stored at -20°C to -80°C. Avoid repeated freeze-thaw cycles.

## APPLICATIONS

<b>Applications:</b>	WB, IHC-P, IP
----------------------	---------------

## RECOMMENDED CONCENTRATION

<b>IHC-P</b>	IHC-P: 1:200-1:1000
<b>Western Blot</b>	WB: 1:500-1:2000
<b>Immunoprecipitation</b>	IP: 1-5µL/mg of lysate

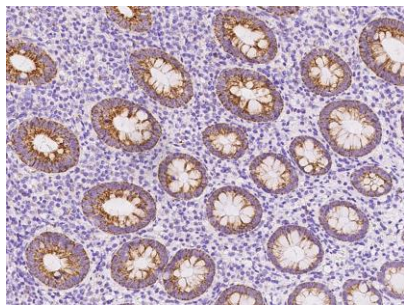
**Please Note:** Optimal concentrations/dilutions should be determined by the end user.

# HIGD1A Antibody, Rabbit PAb, Antigen Affinity Purified

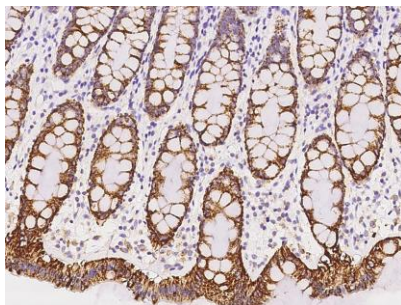


Sino Biological  
Biological Solution Specialist

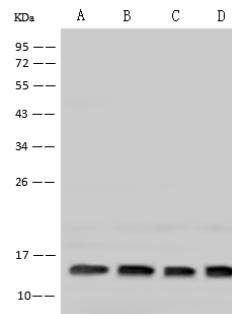
Catalog Number: 203185-T44



Immunohistochemical staining of human HIGD1A in human appendix with rabbit polyclonal antibody at 1:500 dilution, formalin-fixed paraffin embedded sections.



Immunohistochemical staining of human HIGD1A in human rectum with rabbit polyclonal antibody at 1:500 dilution, formalin-fixed paraffin embedded sections.



Anti-HIGD1A rabbit polyclonal antibody at 1:500 dilution

Lane A: A431 Whole Cell Lysate

Lane B: HeLa Whole Cell Lysate

Lane C: HepG2 Whole Cell Lysate

Lane D: 293 Whole Cell Lysate

Lysates/proteins at 30 µg per lane.

Secondary

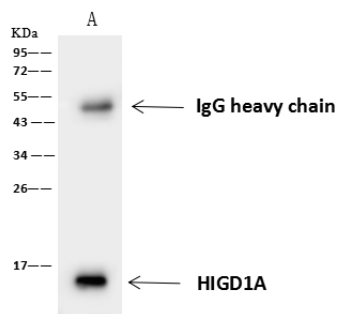
Goat Anti-Rabbit IgG (H+L)/HRP at 1/10000 dilution.

Developed using the ECL technique.

Performed under reducing conditions.

Predicted band size: 12 kDa

Observed band size: 15 kDa



HIGD1A was immunoprecipitated using:  
Lane A: 0.5 mg HepG2 Whole Cell Lysate

4 µL anti-HIGD1A rabbit polyclonal antibody  
and 60 µg of Immunomagnetic beads Protein  
A/G.

Primary antibody:

Anti-HIGD1A rabbit polyclonal antibody, at  
1:100 dilution

Secondary antibody:

Goat Anti-Rabbit IgG (H+L)/HRP at 1/10000  
dilution

Developed using the ECL technique.

Performed under reducing conditions.

Predicted band size: 12 kDa

Observed band size: 12 kDa

Manufactured By Sino Biological Inc., FOR RESEARCH USE ONLY. NOT FOR USE IN HUMANS.

Tel: 215-583-7898 (US); +86-400-890-9989(Global) •

<http://www.sinobiological.com>