

# MYBPC1 Antibody, Rabbit PAb, Antigen Affinity Purified



Sino Biological  
Biological Solution Specialist

Catalog Number: 203367-T08

## GENERAL INFORMATION

Immunogen:	E. coli-derived Human MYBPC1 fragment
Preparation	Produced in rabbits immunized with E. coli-derived Human MYBPC1 fragment, and purified by antigen affinity chromatography.
Ig Type:	Rabbit IgG
Specificity:	Human MYBPC1
Formulation:	PBS, pH7.0 with 0.03% Proclin300
Storage:	This antibody can be stored at 2°C-8°C for one month without detectable loss of activity. Antibody products are stable for twelve months from date of receipt when stored at -20°C to -80°C. Avoid repeated freeze-thaw cycles.

## APPLICATIONS

Applications:	IHC-P
---------------	-------

## RECOMMENDED CONCENTRATION

IHC-P	IHC-P: 1:50-1:200
-------	-------------------

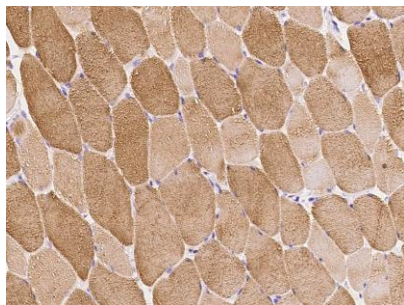
***Please Note: Optimal concentrations/dilutions should be determined by the end user.***

# MYBPC1 Antibody, Rabbit PAb, Antigen Affinity Purified

Catalog Number: 203367-T08



Sino Biological  
Biological Solution Specialist



Immunohistochemical staining of human MYBPC1 in human skeletal muscle with rabbit polyclonal antibody at 1:100 dilution, formalin-fixed paraffin embedded sections.