

SPTY2D1 Antibody, Rabbit PAb, Antigen Affinity Purified



Sino Biological
Biological Solution Specialist

Catalog Number: 203414-T10

GENERAL INFORMATION

Immunogen:	E. coli-derived Human SPTY2D1 fragment
Preparation	Produced in rabbits immunized with E. coli-derived Human SPTY2D1 fragment, and purified by antigen affinity chromatography.
Ig Type:	Rabbit IgG
Specificity:	Human SPTY2D1
Formulation:	PBS, pH7.0 with 0.03% Proclin300
Storage:	This antibody can be stored at 2°C-8°C for one month without detectable loss of activity. Antibody products are stable for twelve months from date of receipt when stored at -20°C to -80°C. Preservative-Free. Avoid repeated freeze-thaw cycles.
Alternative Names:	SPTY2D1,Spt2

APPLICATIONS

Applications:	IHC-P,ICC/IF
---------------	--------------

RECOMMENDED CONCENTRATION

IHC-P	IHC-P: 1:50-1:200
ICC/IF	ICC/IF: 1:100-1:500

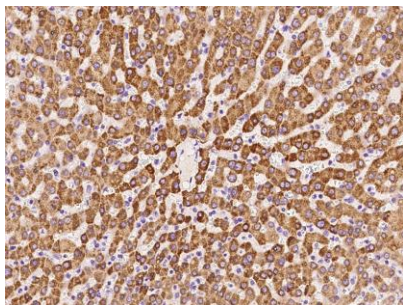
Please Note: Optimal concentrations/dilutions should be determined by the end user.

SPTY2D1 Antibody, Rabbit PAb, Antigen Affinity Purified

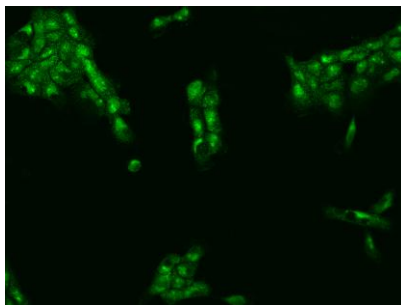
Catalog Number: 203414-T10



Sino Biological
Biological Solution Specialist



Immunohistochemical staining of human SPTY2D1 in human liver with rabbit polyclonal antibody at 1:100 dilution, formalin-fixed paraffin embedded sections.



Immunofluorescence staining of SPTY2D1 in A431 cells. Cells were fixed with 4% PFA, permeabilized with 0.1% Triton X-100 in PBS, blocked with 10% serum, and incubated with rabbit anti-Human SPTY2D1 polyclonal antibody (dilution ratio 1:200) at 4°C overnight. Then cells were stained with the Alexa Fluor®488-conjugated Goat Anti-rabbit IgG secondary antibody (green). Positive staining was localized to Nucleus and cytoplasm.