

RhoGDI/ARHGDI Antibody, Rabbit PAb, Antigen Affinity Purified



Sino Biological
Biological Solution Specialist

Catalog Number: 203533-T44

GENERAL INFORMATION

Immunogen:	E. coli-derived Human RhoGDI/ARHGDI fragment
Preparation	Produced in rabbits immunized with E. coli-derived Human RhoGDI/ARHGDI fragment, and purified by antigen affinity chromatography.
Ig Type:	Rabbit IgG
Specificity:	Human RhoGDI/ARHGDI
Formulation:	PBS, pH7.0 with 0.03% Proclin300
Storage:	This antibody can be stored at 2°C-8°C for one month without detectable loss of activity. Antibody products are stable for twelve months from date of receipt when stored at -20°C to -80°C. Avoid repeated freeze-thaw cycles.

APPLICATIONS

Applications:	WB, IHC-P, IP
---------------	---------------

RECOMMENDED CONCENTRATION

IHC-P	IHC-P: 1:50-1:200
Western Blot	WB: 1:500-1:2000
Immunoprecipitation	IP: 5-10 µL/mg of lysate

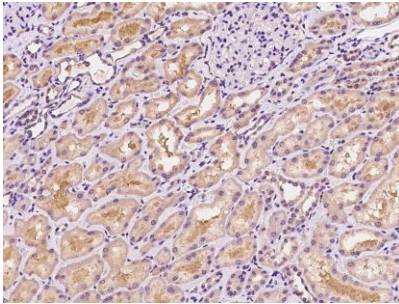
Please Note: Optimal concentrations/dilutions should be determined by the end user.

RhoGDI/ARHGDI Antibody, Rabbit PAb, Antigen Affinity Purified

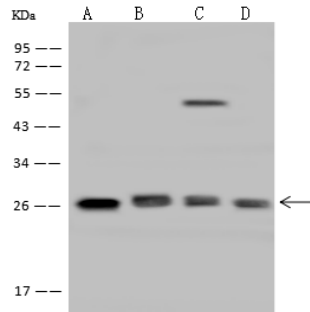


Sino Biological
Biological Solution Specialist

Catalog Number: 203533-T44



Immunohistochemical staining of human ARHGDI in human kidney with rabbit polyclonal antibody at 1:100 dilution, formalin-fixed paraffin embedded sections.



Anti-ARHGDI rabbit polyclonal antibody at 1:500 dilution

Lane A: Jurkat Whole Cell Lysate

Lane B: HeLa Whole Cell Lysate

Lane C: HL-60 Whole Cell Lysate

Lane D: U-251 MG Whole Cell Lysate

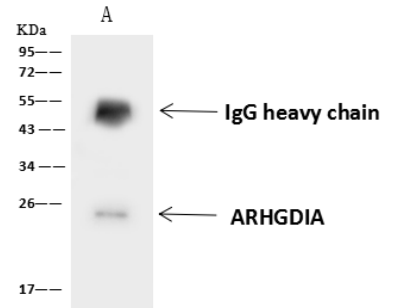
Lysates/proteins at 30 µg per lane.

Secondary

Goat Anti-Rabbit IgG (H+L)/HRP at 1/10000 dilution.

Developed using the ECL technique.
Performed under reducing conditions.

Predicted band size: 23 kDa
Observed band size: 26 kDa



ARHGDI was immunoprecipitated using:
Lane A: 0.5 mg HL-60 Whole Cell Lysate

4 µL anti-ARHGDI rabbit polyclonal antibody and 60 µg of Immunomagnetic beads Protein A/G.

Primary antibody:

Anti-ARHGDI rabbit polyclonal antibody, at 1:100 dilution

Secondary antibody:

Goat Anti-Rabbit IgG (H+L)/HRP at 1/10000 dilution

Developed using the ECL technique.
Performed under reducing conditions.

Predicted band size: 23 kDa
Observed band size: 25 kDa