

# C14orf80/TEDC1 Antibody, Rabbit PAb, Antigen Affinity Purified



Sino Biological  
Biological Solution Specialist

Catalog Number: 203715-T36

## GENERAL INFORMATION

Immunogen:	E. coli-derived Human C14orf80/TEDC1 fragment
Preparation	Produced in rabbits immunized with E. coli-derived Human C14orf80/TEDC1 fragment, and purified by antigen affinity chromatography.
Ig Type:	Rabbit IgG
Specificity:	Human C14orf80/TEDC1
Formulation:	PBS, pH7.0 with 0.03% Proclin300
Storage:	This antibody can be stored at 2°C-8°C for one month without detectable loss of activity. Antibody products are stable for twelve months from date of receipt when stored at -20°C to -80°C. Avoid repeated freeze-thaw cycles.

## APPLICATIONS

Applications:	WB, IP
---------------	--------

## RECOMMENDED CONCENTRATION

Western Blot	WB: 1:500-1:2000
Immunoprecipitation	IP:1-5µL/mg of lysate

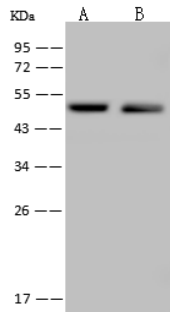
**Please Note: Optimal concentrations/dilutions should be determined by the end user.**

# C14orf80/TEDC1 Antibody, Rabbit PAb, Antigen Affinity Purified



Sino Biological  
Biological Solution Specialist

Catalog Number: 203715-T36



Anti-C14orf80 rabbit polyclonal antibody at 1:500 dilution

Lane A: Jurkat Whole Cell Lysate

Lane B: U-251 MG Whole Cell Lysate

Lysates/proteins at 30 µg per lane.

Secondary

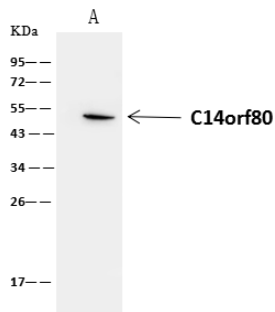
Goat Anti-Rabbit IgG (H+L)/HRP at 1/10000 dilution.

Developed using the ECL technique.

Performed under reducing conditions.

Predicted band size: 54 kDa

Observed band size: 54 kDa



C14orf80 was immunoprecipitated using:  
Lane A: 0.5 mg Jurkat Whole Cell Lysate

4 µL anti-C14orf80 rabbit polyclonal antibody  
and 60 µg of Immunomagnetic beads Protein A/G.

Primary antibody:

Anti-C14orf80 rabbit polyclonal antibody, at 1:100 dilution

Secondary antibody:

Clean-Blot IP Detection Reagent (HRP) at 1:1000 dilution

Developed using the ECL technique.

Performed under reducing conditions.

Predicted band size: 54 kDa

Observed band size: 50 kDa