

# KATNA1/Katanin p60 Antibody, Rabbit PAb, Antigen Affinity Purified



Sino Biological  
Biological Solution Specialist

Catalog Number: 203745-T32

## GENERAL INFORMATION

Immunogen:	E. coli-derived Human KATNA1/Katanin p60 fragment
Preparation	Produced in rabbits immunized with E. coli-derived Human KATNA1/Katanin p60 fragment, and purified by antigen affinity chromatography.
Ig Type:	Rabbit IgG
Specificity:	Human KATNA1/Katanin p60
Formulation:	PBS, pH7.0 with 0.03% Proclin300
Storage:	This antibody can be stored at 2°C-8°C for one month without detectable loss of activity. Antibody products are stable for twelve months from date of receipt when stored at -20°C to -80°C. Avoid repeated freeze-thaw cycles.

## APPLICATIONS

Applications:	WB
---------------	----

## RECOMMENDED CONCENTRATION

Western Blot	WB: 1:500-1:1000
--------------	------------------

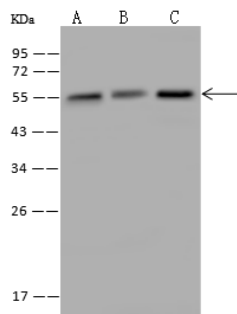
**Please Note: Optimal concentrations/dilutions should be determined by the end user.**

# KATNA1/Katanin p60 Antibody, Rabbit PAb, Antigen Affinity Purified



Sino Biological  
Biological Solution Specialist

Catalog Number: 203745-T32



Anti-KATNA1 rabbit polyclonal antibody at  
1:500 dilution

Lane A: HeLa Whole Cell Lysate  
Lane B: HepG2 Whole Cell Lysate  
Lane C: 293 Whole Cell Lysate

Lysates/proteins at 30 µg per lane.

Secondary

Goat Anti-Rabbit IgG (H+L)/HRP at 1/10000  
dilution.

Developed using the ECL technique.

Performed under reducing conditions.

Predicted band size:56 kDa

Observed band size:56 kDa