

Annexin A1/ANXA1 Antibody, Rabbit PAb, Antigen Affinity Purified



Sino Biological
Biological Solution Specialist

Catalog Number: 203969-T34

GENERAL INFORMATION

Immunogen:	E. coli-derived Human Annexin A1/ANXA1 fragment
Preparation	Produced in rabbits immunized with E. coli-derived Human Annexin A1/ANXA1 fragment, and purified by antigen affinity chromatography.
Ig Type:	Rabbit IgG
Specificity:	Human Annexin A1/ANXA1
Formulation:	PBS, pH7.0 with 0.03% Proclin300
Storage:	This antibody can be stored at 2°C-8°C for one month without detectable loss of activity. Antibody products are stable for twelve months from date of receipt when stored at -20°C to -80°C. Avoid repeated freeze-thaw cycles.
Alternative Names:	ANXA1

APPLICATIONS

Applications:	WB, ICC/IF
---------------	------------

RECOMMENDED CONCENTRATION

ICC/IF	ICC/IF: 1:100-1:500
Western Blot	WB: 1:500-1:2000

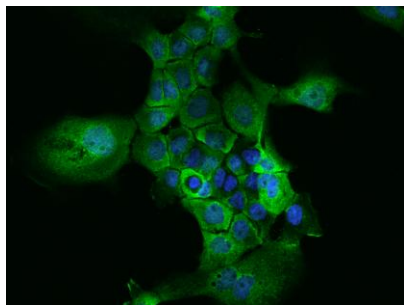
Please Note: Optimal concentrations/dilutions should be determined by the end user.

Annexin A1/ANXA1 Antibody, Rabbit PAb, Antigen Affinity Purified

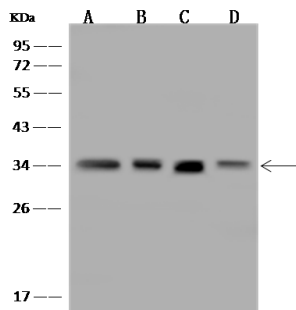


Sino Biological
Biological Solution Specialist

Catalog Number: 203969-T34



Immunofluorescence staining of ANXA1 in A431 cells. Cells were fixed with 4% PFA, permeabilized with 0.1% Triton X-100 in PBS, blocked with 10% serum, and incubated with rabbit anti-Human ANXA1 polyclonal antibody (dilution ratio 1:200) at 4°C overnight. Then cells were stained with the Alexa Fluor®488-conjugated Goat Anti-rabbit IgG secondary antibody (green) and counterstained with DAPI (blue). Positive staining was localized to Cytoplasm and cell membrane.



Anti-ANXA1 rabbit polyclonal antibody at 1:500 dilution

Lane A: A431 Whole Cell Lysate

Lane B: H1299 Whole Cell Lysate

Lane C: HeLa Whole Cell Lysate

Lane D: Jurkat Whole Cell Lysate

Lysates/proteins at 30 µg per lane.

Secondary

Goat Anti-Rabbit IgG (H+L)/HRP at 1/10000 dilution.

Developed using the ECL technique.

Performed under reducing conditions.

Predicted band size: 39 kDa

Observed band size: 34 kDa