

SSBP1 Antibody, Rabbit PAb, Antigen Affinity Purified



Sino Biological
Biological Solution Specialist

Catalog Number: 204033-T38

GENERAL INFORMATION

Immunogen:	E. coli-derived Human SSBP1 fragment
Preparation	Produced in rabbits immunized with E. coli-derived Human SSBP1 fragment, and purified by antigen affinity chromatography.
Ig Type:	Rabbit IgG
Specificity:	Human SSBP1
Formulation:	PBS, pH7.0 with 0.03% Proclin300
Storage:	This antibody can be stored at 2°C-8°C for one month without detectable loss of activity. Antibody products are stable for twelve months from date of receipt when stored at -20°C to -80°C. Preservative-Free. Avoid repeated freeze-thaw cycles.
Alternative Names:	Mt-SSB,mtSSB,SOSS-B1,SSBP

APPLICATIONS

Applications:	WB,ICC/IF,IP
----------------------	--------------

RECOMMENDED CONCENTRATION

ICC/IF	ICC/IF: 1:500-1:2500
Western Blot	WB: 1:500-1:1000
Immunoprecipitation	IP:1-2 µL/mg of lysate

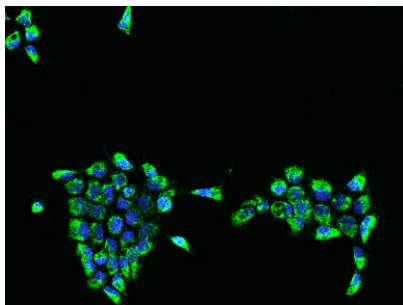
Please Note: Optimal concentrations/dilutions should be determined by the end user.

SSBP1 Antibody, Rabbit PAb, Antigen Affinity Purified

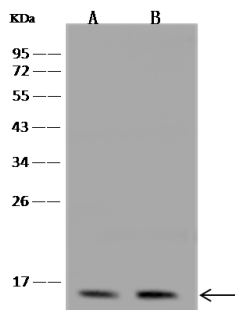


Sino Biological
Biological Solution Specialist

Catalog Number: 204033-T38



Immunofluorescence staining of SSBP1 in A431 cells. Cells were fixed with 4% PFA, permeabilized with 0.1% Triton X-100 in PBS, blocked with 10% serum, and incubated with rabbit anti-Human SSBP1 polyclonal antibody (dilution ratio 1:1000) at 4°C overnight. Then cells were stained with the Alexa Fluor®488-conjugated Goat Anti-rabbit IgG secondary antibody (green) and counterstained with DAPI (blue). Positive staining was localized to Cytoplasm.



Anti-SSBP1 rabbit polyclonal antibody at 1:500 dilution

Lane A: HeLa Whole Cell Lysate

Lane B: U-251 MG Whole Cell Lysate

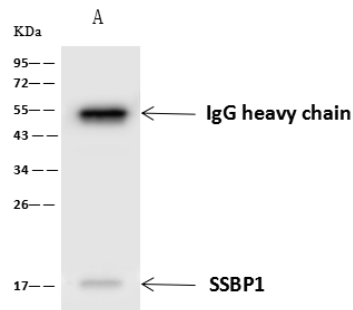
Lysates/proteins at 30 µg per lane.

Secondary
Goat Anti-Rabbit IgG (H+L)/HRP at 1/10000 dilution.

Developed using the ECL technique. Performed under reducing conditions.

Predicted band size: 17 kDa

Observed band size: 15 kDa



SSBP1 was immunoprecipitated using:

Lane A: 0.5 mg U-251 MG Whole Cell Lysate

1 µL anti-SSBP1 rabbit polyclonal antibody and 60 µg of Immunomagnetic beads Protein A/G. Primary antibody:

Anti-SSBP1 rabbit polyclonal antibody, at 1:500 dilution

Secondary antibody:
Goat Anti-Rabbit IgG (H+L)/HRP at 1/10000 dilution

Developed using the ECL technique. Performed under reducing conditions.

Predicted band size: 17 kDa

Observed band size: 15 kDa