

PHGDH Antibody, Rabbit PAb, Antigen Affinity Purified



Sino Biological
Biological Solution Specialist

Catalog Number: 204048-T46

GENERAL INFORMATION

Immunogen:	E. coli-derived Human PHGDH fragment
Preparation	Produced in rabbits immunized with E. coli-derived Human PHGDH fragment, and purified by antigen affinity chromatography.
Ig Type:	Rabbit IgG
Specificity:	Human PHGDH
Formulation:	PBS, pH7.0 with 0.03% Proclin300
Storage:	This antibody can be stored at 2°C-8°C for one month without detectable loss of activity. Antibody products are stable for twelve months from date of receipt when stored at -20°C to -80°C. Preservative-Free. Avoid repeated freeze-thaw cycles.
Alternative Names:	3-PGDH,3PGDH,HEL-S-113,NLS,NLS1,PDG,PGAD,PGD,PGDH,PHGDHD,SERA

APPLICATIONS

Applications:	WB,IHC-P,ICC/IF,IP
----------------------	--------------------

RECOMMENDED CONCENTRATION

IHC-P	IHC-P: 1:100-1:500
ICC/IF	ICC/IF: 1:100-1:500
Western Blot	WB: 1:500-1:2000
Immunoprecipitation	IP:1-5μL/mg of lysate

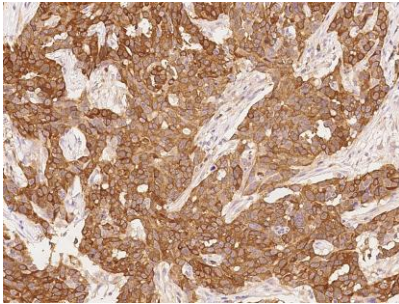
Please Note: Optimal concentrations/dilutions should be determined by the end user.

PHGDH Antibody, Rabbit PAb, Antigen Affinity Purified

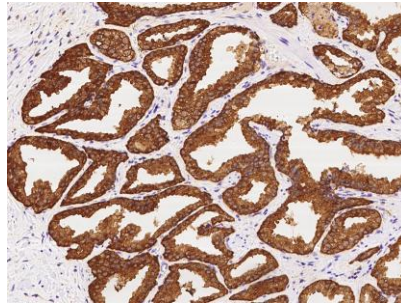


Sino Biological
Biological Solution Specialist

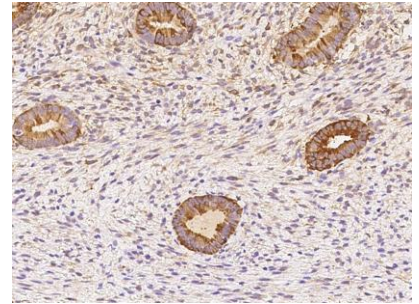
Catalog Number: 204048-T46



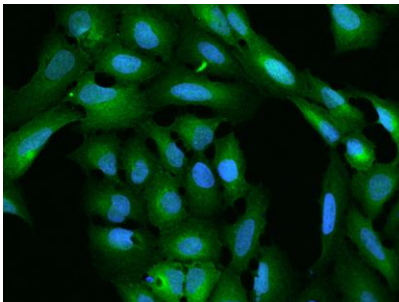
Immunohistochemical staining of human PHGDH in human breast carcinoma with rabbit polyclonal antibody at 1:200 dilution, formalin-fixed paraffin embedded sections.



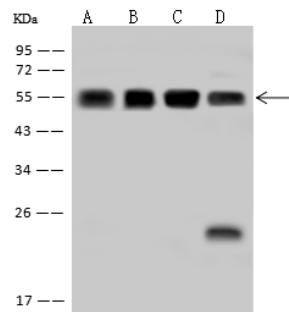
Immunohistochemical staining of human PHGDH in human prostate with rabbit polyclonal antibody at 1:200 dilution, formalin-fixed paraffin embedded sections.



Immunohistochemical staining of human PHGDH in human corpus uteri with rabbit polyclonal antibody at 1:200 dilution, formalin-fixed paraffin embedded sections.



Immunofluorescence staining of PHGDH in U2OS cells. Cells were fixed with 4% PFA, permeabilized with 0.1% Triton X-100 in PBS, blocked with 10% serum, and incubated with rabbit anti-Human PHGDH polyclonal antibody (dilution ratio 1:200) at 4°C overnight. Then cells were stained with the Alexa Fluor®488-conjugated Goat Anti-rabbit IgG secondary antibody (green) and counterstained with DAPI (blue). Positive staining was localized to Cytoplasm.



Anti-PHGDH rabbit polyclonal antibody at 1:500 dilution

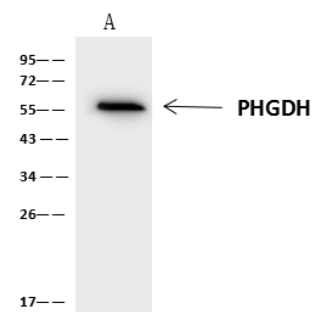
Lane A: A431 Whole Cell Lysate
Lane B: Raji Whole Cell Lysate
Lane C: HeLa Whole Cell Lysate
Lane D: Jurkat Whole Cell Lysate

Lysates/proteins at 30 µg per lane.

Secondary
Goat Anti-Rabbit IgG (H+L)/HRP at 1/10000 dilution.

Developed using the ECL technique. Performed under reducing conditions.

Predicted band size: 57 kDa
Observed band size: 55 kDa



PHGDH was immunoprecipitated using:
Lane A: 0.5 mg Jurkat Whole Cell Lysate

4 µL anti-PHGDH rabbit polyclonal antibody and 60 µg of Immunomagnetic beads Protein A/G. Primary antibody:

Anti-PHGDH rabbit polyclonal antibody, at 1:100 dilution

Secondary antibody:
Clean-Blot IP Detection Reagent (HRP) at 1:1000 dilution

Developed using the ECL technique. Performed under reducing conditions.

Predicted band size: 57 kDa
Observed band size: 55 kDa

Manufactured By Sino Biological Inc., FOR RESEARCH USE ONLY. NOT FOR USE IN HUMANS.

Tel: 215-583-7898 (US); +86-400-890-9989 (Global) •

<http://www.sinobiological.com>