

ADAM15 Antibody, Rabbit PAb, Antigen Affinity Purified



Sino Biological
Biological Solution Specialist

Catalog Number: 204241-T10

GENERAL INFORMATION

Immunogen:	E. coli-derived Human ADAM15 fragment
Preparation	Produced in rabbits immunized with E. coli-derived Human ADAM15 fragment, and purified by antigen affinity chromatography.
Ig Type:	Rabbit IgG
Specificity:	Human ADAM15
Formulation:	PBS, pH7.0 with 0.03% Proclin300
Storage:	This antibody can be stored at 2°C-8°C for one month without detectable loss of activity. Antibody products are stable for twelve months from date of receipt when stored at -20°C to -80°C. Preservative-Free. Avoid repeated freeze-thaw cycles.
Alternative Names:	MDC15

APPLICATIONS

Applications:	IHC-P, ICC/IF
---------------	---------------

RECOMMENDED CONCENTRATION

IHC-P	IHC-P: 1:50-1:200
ICC/IF	ICC/IF: 1:100-1:500

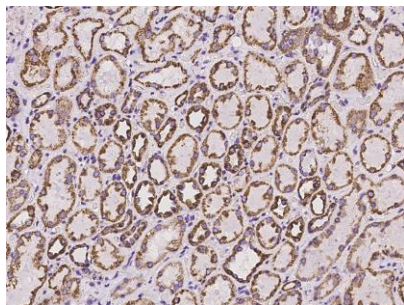
Please Note: Optimal concentrations/dilutions should be determined by the end user.

ADAM15 Antibody, Rabbit PAb, Antigen Affinity Purified

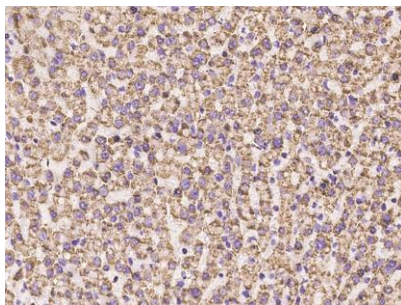
Catalog Number: 204241-T10



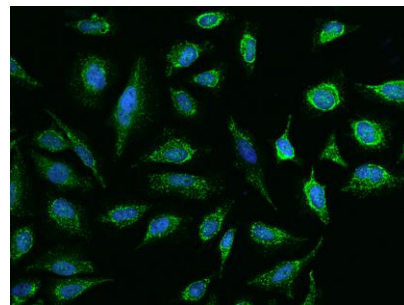
Sino Biological
Biological Solution Specialist



Immunohistochemical staining of human ADAM15 in human kidney with rabbit polyclonal antibody at 1:100 dilution, formalin-fixed paraffin embedded sections.



Immunohistochemical staining of human ADAM15 in human liver with rabbit polyclonal antibody at 1:100 dilution, formalin-fixed paraffin embedded sections.



Immunofluorescence staining of ADAM15 in HeLa cells. Cells were fixed with 4% PFA, blocked with 10% serum, and incubated with rabbit anti-Human ADAM15 polyclonal antibody (dilution ratio 1:200) at 4°C overnight. Then cells were stained with the Alexa Fluor®488-conjugated Goat Anti-rabbit IgG secondary antibody (green) and counterstained with DAPI (blue). Positive staining was localized to Cytoplasm.