

HK2 Antibody, Rabbit PAb, Antigen Affinity Purified



Sino Biological
Biological Solution Specialist

Catalog Number: 204331-T32

GENERAL INFORMATION

| | |
|--------------------|---|
| Immunogen: | E. coli-derived Human HK2 fragment |
| Preparation | Produced in rabbits immunized with E. coli-derived Human HK2 fragment, and purified by antigen affinity chromatography. |
| Ig Type: | Rabbit IgG |
| Specificity: | Human HK2 |
| Formulation: | PBS, pH7.0 with 0.03% Proclin300 |
| Storage: | This antibody can be stored at 2°C-8°C for one month without detectable loss of activity. Antibody products are stable for twelve months from date of receipt when stored at -20°C to -80°C. Avoid repeated freeze-thaw cycles. |
| Alternative Names: | HK2 |

APPLICATIONS

| | |
|---------------|----|
| Applications: | WB |
|---------------|----|

RECOMMENDED CONCENTRATION

| | |
|--------------|------------------|
| Western Blot | WB: 1:500-1:2000 |
|--------------|------------------|

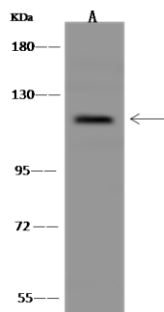
Please Note: Optimal concentrations/dilutions should be determined by the end user.

HK2 Antibody, Rabbit PAb, Antigen Affinity Purified



Sino Biological
Biological Solution Specialist

Catalog Number: 204331-T32



Anti-HK2 rabbit polyclonal antibody at 1:500 dilution

Lane A: HeLa Whole Cell Lysate

Lane B: NCI-H460 Whole Cell Lysate

Lysates/proteins at 30 µg per lane.

Secondary

Goat Anti-Rabbit IgG (H+L)/HRP at 1/10000 dilution.

Developed using the ECL technique.

Performed under reducing conditions.

Predicted band size: 102 kDa

Observed band size: 120 kDa