

# Perilipin 3/PLIN3/M6PRBP1 Antibody, Rabbit PAb, Antigen Affinity Purified



Sino Biological  
Biological Solution Specialist

Catalog Number: 204687-T02

## GENERAL INFORMATION

Immunogen:	E. coli-derived Human Perilipin 3/PLIN3/M6PRBP1 fragment
Preparation	Produced in rabbits immunized with E. coli-derived Human Perilipin 3/PLIN3/M6PRBP1 fragment, and purified by antigen affinity chromatography.
Ig Type:	Rabbit IgG
Specificity:	Human Perilipin 3/PLIN3/M6PRBP1
Formulation:	PBS, pH7.0 with 0.03% Proclin300
Storage:	This antibody can be stored at 2°C-8°C for one month without detectable loss of activity. Antibody products are stable for twelve months from date of receipt when stored at -20°C to -80°C. Preservative-Free. Avoid repeated freeze-thaw cycles.
Alternative Names:	M6PRBP1, PP17, TIP47

## APPLICATIONS

Applications:	ICC/IF
---------------	--------

## RECOMMENDED CONCENTRATION

ICC/IF	ICC/IF: 1:100-1:500
--------	---------------------

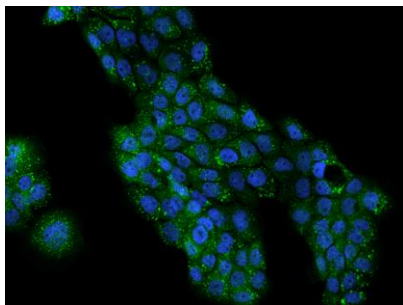
**Please Note: Optimal concentrations/dilutions should be determined by the end user.**

# Perilipin 3/PLIN3/M6PRBP1 Antibody, Rabbit PAb, Antigen Affinity Purified



Sino Biological  
Biological Solution Specialist

Catalog Number: 204687-T02



Immunofluorescence staining of M6PRBP1 in A431 cells. Cells were fixed with 4% PFA, permeabilized with 0.1% Triton X-100 in PBS, blocked with 10% serum, and incubated with rabbit anti-Human M6PRBP1 polyclonal antibody (dilution ratio 1:200) at 4°C overnight. Then cells were stained with the Alexa Fluor®488-conjugated Goat Anti-rabbit IgG secondary antibody (green) and counterstained with DAPI (blue). Positive staining was localized to Cytoplasm.