

# Gephyrin/GPHN Antibody, Rabbit PAb, Antigen Affinity Purified



Sino Biological  
Biological Solution Specialist

Catalog Number: 204785-T40

## GENERAL INFORMATION

Immunogen:	E. coli-derived Human Gephyrin/GPHN fragment
Preparation	Produced in rabbits immunized with E. coli-derived Human Gephyrin/GPHN fragment, and purified by antigen affinity chromatography.
Ig Type:	Rabbit IgG
Specificity:	Human Gephyrin/GPHN
Formulation:	PBS, pH7.0 with 0.03% Proclin300
Storage:	This antibody can be stored at 2°C-8°C for one month without detectable loss of activity. Antibody products are stable for twelve months from date of receipt when stored at -20°C to -80°C. Avoid repeated freeze-thaw cycles.
Alternative Names:	GPHN

## APPLICATIONS

Applications:	WB, IHC-P
---------------	-----------

## RECOMMENDED CONCENTRATION

IHC-P	IHC-P: 1:200-1:1000
Western Blot	WB: 1:500-1:2000

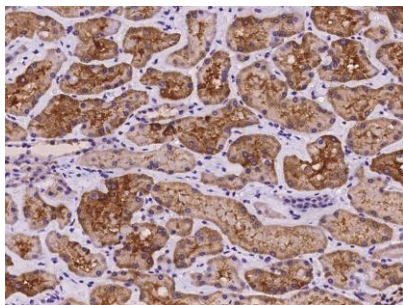
***Please Note: Optimal concentrations/dilutions should be determined by the end user.***

# Gephyrin/GPHN Antibody, Rabbit PAb, Antigen Affinity Purified

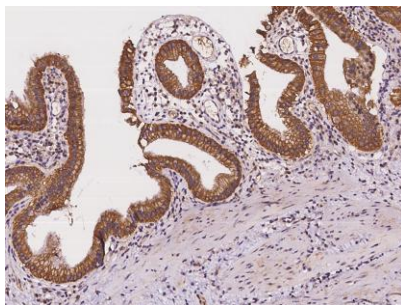


Sino Biological  
Biological Solution Specialist

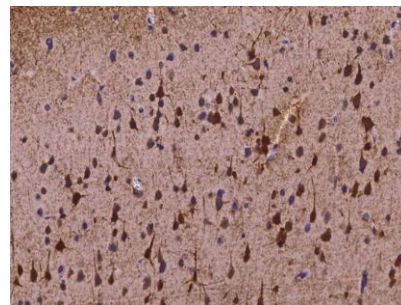
Catalog Number: 204785-T40



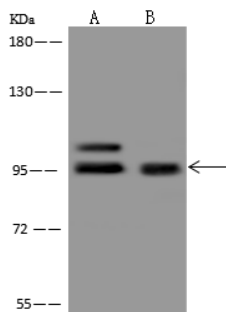
Immunohistochemical staining of human GPHN in human kidney with rabbit polyclonal antibody at 1:500 dilution, formalin-fixed paraffin embedded sections.



Immunohistochemical staining of human GPHN in human gallbladder with rabbit polyclonal antibody at 1:500 dilution, formalin-fixed paraffin embedded sections.



Immunohistochemical staining of human GPHN in human brain with rabbit polyclonal antibody at 1:500 dilution, formalin-fixed paraffin embedded sections.



Anti-Gephyrin/GPHN rabbit polyclonal antibody at 1:500 dilution

Lane A: MCF7 Whole Cell Lysate

Lane B: U251MG Whole Cell Lysate

Lysates/proteins at 30 µg per lane.

Secondary

Goat Anti-Rabbit IgG (H+L)/HRP at 1/10000 dilution.

Developed using the ECL technique.

Performed under reducing conditions.

Predicted band size: 80 kDa

Observed band size: 95 kDa

**For Research Use Only. Not for use in diagnostic or therapeutic procedures.**

**Tel: +86-400-890-9989 (Global), +1-215-583-7898 (USA), +49(0)6196 9678656 (Europe)**

**Website: <http://www.sinobiological.com>**