

# SLC3A1 Antibody, Rabbit PAb, Antigen Affinity Purified



Sino Biological  
Biological Solution Specialist

Catalog Number: 204834-T02

## GENERAL INFORMATION

<b>Immunogen:</b>	E. coli-derived Human SLC3A1 fragment
<b>Preparation</b>	Produced in rabbits immunized with E. coli-derived Human SLC3A1 fragment, and purified by antigen affinity chromatography.
<b>Ig Type:</b>	Rabbit IgG
<b>Specificity:</b>	Human SLC3A1
<b>Formulation:</b>	PBS, pH7.0 with 0.03% Proclin300
<b>Storage:</b>	This antibody can be stored at 2°C-8°C for one month without detectable loss of activity. Antibody products are stable for twelve months from date of receipt when stored at -20°C to -80°C. Preservative-Free. Avoid repeated freeze-thaw cycles.
<b>Alternative Names:</b>	ATR1,CSNU1,D2H,NBAT,RBAT

## APPLICATIONS

**Applications:** ICC/IF

## RECOMMENDED CONCENTRATION

**ICC/IF** ICC/IF: 1:100-1:500

**Please Note: Optimal concentrations/dilutions should be determined by the end user.**

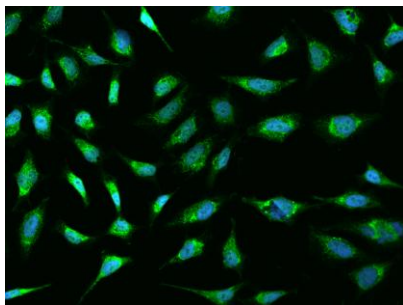
# SLC3A1 Antibody, Rabbit PAb, Antigen Affinity Purified



Sino Biological  
Biological Solution Specialist

Catalog Number: 204834-T02

---



Immunofluorescence staining of SLC3A1 in HeLa cells. Cells were fixed with 4% PFA, permeabilized with 0.1% Triton X-100 in PBS, blocked with 10% serum, and incubated with rabbit anti-Human SLC3A1 polyclonal antibody (dilution ratio 1:200) at 4°C overnight. Then cells were stained with the Alexa Fluor®488-conjugated Goat Anti-rabbit IgG secondary antibody (green) and counterstained with DAPI (blue). Positive staining was localized to Cytoplasm.