

ATXN7L2 Antibody, Rabbit PAb, Antigen Affinity Purified



Sino Biological
Biological Solution Specialist

Catalog Number: 205103-T08

GENERAL INFORMATION

| | |
|--------------|---------------------------------------------------------------------------------------------------------------------------------------------------------------------------------------------------------------------------------|
| Immunogen: | E. coli-derived Human ATXN7L2 fragment |
| Preparation | Produced in rabbits immunized with E. coli-derived Human ATXN7L2 fragment, and purified by antigen affinity chromatography. |
| Ig Type: | Rabbit IgG |
| Specificity: | Human ATXN7L2 |
| Formulation: | PBS, pH7.0 with 0.03% Proclin300 |
| Storage: | This antibody can be stored at 2°C-8°C for one month without detectable loss of activity. Antibody products are stable for twelve months from date of receipt when stored at -20°C to -80°C. Avoid repeated freeze-thaw cycles. |

APPLICATIONS

| | |
|---------------|-------|
| Applications: | IHC-P |
|---------------|-------|

RECOMMENDED CONCENTRATION

| | |
|-------|---------------------|
| IHC-P | IHC-P: 1:200-1:1000 |
|-------|---------------------|

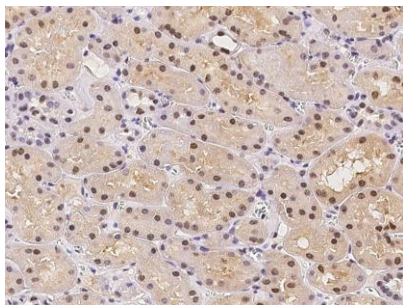
Please Note: Optimal concentrations/dilutions should be determined by the end user.

ATXN7L2 Antibody, Rabbit PAb, Antigen Affinity Purified

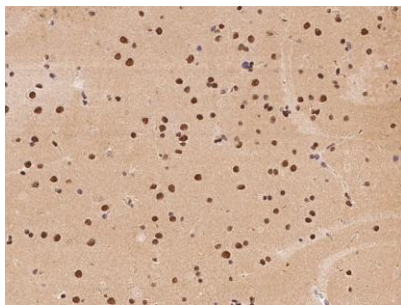
Catalog Number: 205103-T08



Sino Biological
Biological Solution Specialist



Immunohistochemical staining of human ATXN7L2 in human kidney with rabbit polyclonal antibody at 1:500 dilution, formalin-fixed paraffin embedded sections.



Immunohistochemical staining of human ATXN7L2 in human brain with rabbit polyclonal antibody at 1:500 dilution, formalin-fixed paraffin embedded sections.