

Human IL20RB Protein (His Tag)

Catalog Number: 29609-H08B



Sino Biological
Biological Solution Specialist

General Information

Gene Name Synonym:

DIRS1; FNDC6; IL-20R2

Protein Construction:

A DNA sequence encoding the human IL20RB (NP_653318.2) (Met1-Ala230) was expressed with a polyhistidine tag at the C-terminus.

Source: Human

Expression Host: Baculovirus-Insect Cells

QC Testing

Purity: > 90 % as determined by SDS-PAGE.

Endotoxin:

<1.0 EU per µg protein as determined by the LAL method.

Stability:

Samples are stable for up to twelve months from date of receipt at -70 °C

Predicted N terminal: Asp 30

Molecular Mass:

The recombinant human IL20RB consists of 212 amino acids and predicts a molecular mass of 23.9 kDa.

Formulation:

Lyophilized from sterile 20 mM PB, 150 mM NaCl, pH 7.0, 10 % glycerol.

Normally 5 % - 8 % trehalose, mannitol and 0.01% Tween80 are added as protectants before lyophilization. Specific concentrations are included in the hardcopy of COA. Please contact us for any concerns or special requirements.

Usage Guide

Storage:

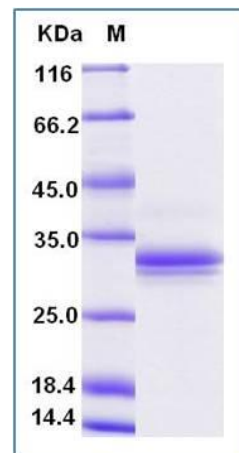
Store it under sterile conditions at -20°C to -80°C upon receiving. Recommend to aliquot the protein into smaller quantities for optimal storage.

Avoid repeated freeze-thaw cycles.

Reconstitution:

Detailed reconstitution instructions are sent along with the products.

SDS-PAGE:



Protein Description

IL2RB belongs to the type II cytokine receptor family. There are two kinds of type II cytokine receptors : cytokine receptors that bind type I and type II interferons; cytokine receptors that bind members of the interleukin-1 family (interleukin-1, interleukin-2 and interleukin-22). Type II cytokine receptors are similar to type I cytokine receptors except they do not possess the signature sequence WSXWS that is characteristic of type I receptors. They are expressed on the surface of certain cells, which bind and respond to a select group of cytokines. These receptors are related predominantly by sequence similarities in their extracellular portions that are composed of tandem Ig-like domains. The intracellular domain of type II cytokine receptors is typically associated with a tyrosine kinase belonging to the Janus kinase (JAK) family. IL2RB and IL2RA (MIM 6562) form a heterodimeric receptor for interleukin-2.

References

- 1.Zhu H, et al. (2009) Expression pattern of mda-7/IL-24 receptors in liver cancer cell lines. *Hepatobiliary Pancreat Dis Int.* 8(4):402-6.
- 2.Logsdon NJ, et al. (2012) Purification, crystallization and preliminary X-ray diffraction analysis of the IL-20-IL-20R1-IL-20R2 complex. *Acta Crystallogr Sect F Struct Biol Cryst Commun.* 68(Pt 1):89-92.
- 3.Kingo K, et al. (2008) Association analysis of IL20RA and IL20RB genes in psoriasis. *Genes Immun.* 9(5):445-51.

Manufactured By Sino Biological Inc., FOR RESEARCH USE ONLY. NOT FOR USE IN HUMANS.

For US Customer: Fax: 267-657-0217

● **Tel: 215-583-7898**

Global Customer: Fax :+86-10-5862-8288

● **Tel:+86-400-890-9989**

● <http://www.sinobiological.com>