

# MSH2 Antibody, Rabbit PAb, Antigen Affinity Purified



Sino Biological  
Biological Solution Specialist

Catalog Number: 310186-T36

## GENERAL INFORMATION

Immunogen:	E. coli-derived Human MSH2 fragment
Preparation	Produced in rabbits immunized with E. coli-derived Human MSH2 fragment, and purified by antigen affinity chromatography.
Ig Type:	Rabbit IgG
Specificity:	Human MSH2
Formulation:	PBS, pH7.0 with 0.03% Proclin300
Storage:	This antibody can be stored at 2°C-8°C for one month without detectable loss of activity. Antibody products are stable for twelve months from date of receipt when stored at -20°C to -80°C. Avoid repeated freeze-thaw cycles.
Alternative Names:	MSH2

## APPLICATIONS

Applications:	WB, IP
---------------	--------

## RECOMMENDED CONCENTRATION

Western Blot	WB: 1:500-1:2000
Immunoprecipitation	IP:1-5µL/mg of lysate

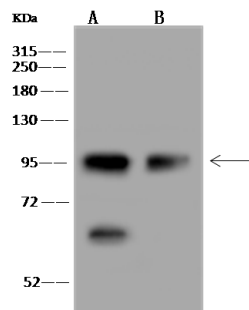
***Please Note: Optimal concentrations/dilutions should be determined by the end user.***

# MSH2 Antibody, Rabbit PAb, Antigen Affinity Purified



Sino Biological  
Biological Solution Specialist

Catalog Number: 310186-T36



Anti-MSH2 rabbit polyclonal antibody at 1:500 dilution

Lane A: HeLa Whole Cell Lysate

Lane B: A549 Whole Cell Lysate

Lysates/proteins at 30 µg per lane.

Secondary

Goat Anti-Rabbit IgG (H+L)/HRP at 1/10000 dilution.

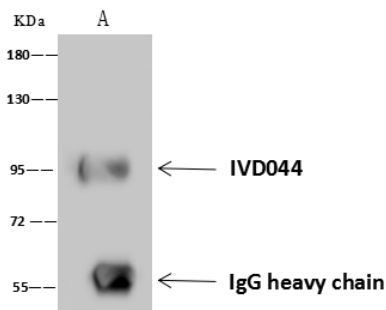
Developed using the ECL technique.

Performed under reducing conditions.

Predicted band size: 105 kDa

Observed band size: 95 kDa

(We are unsure as to the identity of these extra bands.)



IVD044 was immunoprecipitated using:

Lane A: 0.5 mg HeLa Whole Cell Lysate

4 µL anti-IVD044 rabbit polyclonal antibody and 60 µg of Immunomagnetic beads Protein A/G.

Primary antibody:

Anti-IVD044 rabbit polyclonal antibody, at 1:100 dilution

Secondary antibody:

Goat Anti-Rabbit IgG (H+L)/HRP at 1/10000 dilution

Developed using the ECL technique.

Performed under reducing conditions.

Predicted band size: 95 kDa

Observed band size: 95 kDa

For Research Use Only. Not for use in diagnostic or therapeutic procedures.

Tel: +86-400-890-9989 (Global), +1-215-583-7898 (USA), +49(0)6196 9678656 (Europe)

Website: <http://www.sinobiological.com>