

Cytochrome c Antibody, Rabbit PAb, Antigen Affinity Purified



Sino Biological
Biological Solution Specialist

Catalog Number: 310200-T44

GENERAL INFORMATION

Immunogen:	E. coli-derived Human Cytochrome c fragment
Preparation	Produced in rabbits immunized with E. coli-derived Human Cytochrome c fragment, and purified by antigen affinity chromatography.
Ig Type:	Rabbit IgG
Specificity:	Human Cytochrome c
Formulation:	PBS, pH7.0 with 0.03% Proclin300
Storage:	This antibody can be stored at 2°C-8°C for one month without detectable loss of activity. Antibody products are stable for twelve months from date of receipt when stored at -20°C to -80°C. Avoid repeated freeze-thaw cycles.
Alternative Names:	CYCS

APPLICATIONS

Applications:	WB, IHC-P, IP
----------------------	---------------

RECOMMENDED CONCENTRATION

IHC-P	IHC-P: 1:200-1:1000
Western Blot	WB: 1:2000-1:10000
Immunoprecipitation	IP: 1-5µL/mg of lysate

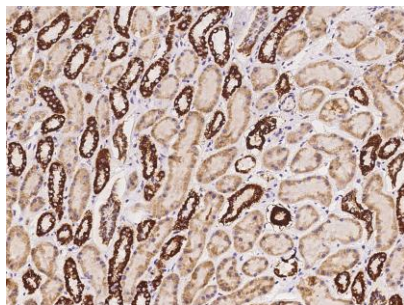
Please Note: Optimal concentrations/dilutions should be determined by the end user.

Cytochrome c Antibody, Rabbit PAb, Antigen Affinity Purified

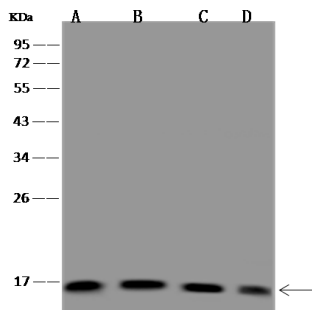
Catalog Number: 310200-T44



Sino Biological
Biological Solution Specialist



Immunohistochemical staining of human
Cytochrome c in human kidney with rabbit
polyclonal antibody at 1:500 dilution, formalin-
fixed paraffin embedded sections.



Anti-Cytochrome c rabbit polyclonal antibody
at 1:2000 dilution

Lane A: HeLa Whole Cell Lysate
Lane B: Jurkat Whole Cell Lysate
Lane C: HEK293 Whole Cell Lysate
Lane D: MCF7 Whole Cell Lysate

Lysates/proteins at 30 µg per lane.

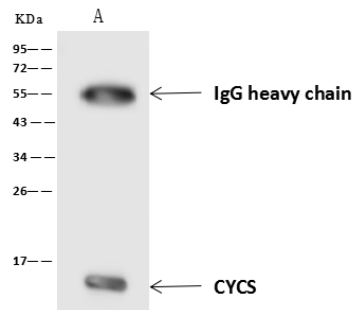
Secondary

Goat Anti-Rabbit IgG (H+L)/HRP at 1/10000
dilution.

Developed using the ECL technique.
Performed under reducing conditions.

Predicted band size: 12 kDa

Observed band size: 12 kDa



CYCS was immunoprecipitated using:
Lane A: 0.5 mg HEK293 Whole Cell Lysate

4 µL anti-CYCS rabbit polyclonal antibody and
60 µg of Immunomagnetic beads Protein A/G.

Primary antibody:

Anti-CYCS rabbit polyclonal antibody, at 1:100
dilution

Secondary antibody:

Goat Anti-Rabbit IgG (H+L)/HRP at 1/10000
dilution

Developed using the ECL technique.
Performed under reducing conditions.

Predicted band size: 12 kDa

Observed band size: 12 kDa