

HIV-2 gp36 Protein (subtype CRF01_AB, strain 07JP_NMC716_clone_01) (His & MBP Tag)

Catalog Number: 40112-V10E



Sino Biological
Biological Solution Specialist

General Information

Gene Name Synonym:

GP36

Protein Construction:

A DNA sequence encoding the HIV-2 envelope glycoprotein gp160 (BAM76170.1)(Gln547-Tyr670), termed as gp36, was expressed with the N-terminal polyhistidine-tagged MBP tag at the N-terminus.

Source: HIV

Expression Host: E. coli

QC Testing

Purity: > 90 % as determined by SDS-PAGE

Endotoxin:

Please contact us for more information.

Stability:

Samples are stable for up to twelve months from date of receipt at -70 °C

Predicted N terminal: Met

Molecular Mass:

The recombinant HIV-2 gp36 consists of 524 amino acids and has a predicted molecular mass of 58.8 kDa. The apparent molecular mass of the recombinant protein is approximately 55 KDa in SDS-PAGE under reducing conditions.

Formulation:

Lyophilized from sterile PBS, pH 7.4.

Normally 5 % - 8 % trehalose, mannitol and 0.01% Tween80 are added as protectants before lyophilization. Specific concentrations are included in the hardcopy of COA. Please contact us for any concerns or special requirements.

Usage Guide

Storage:

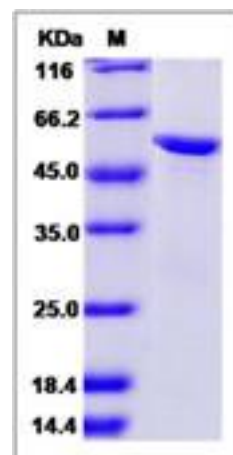
Store it under sterile conditions at -20°C to -80°C upon receiving. Recommend to aliquot the protein into smaller quantities for optimal storage.

Avoid repeated freeze-thaw cycles.

Reconstitution:

Detailed reconstitution instructions are sent along with the products.

SDS-PAGE:



Manufactured By Sino Biological Inc., FOR RESEARCH USE ONLY. NOT FOR USE IN HUMANS.

For US Customer: Fax: 267-657-0217 • Tel: 215-583-7898

Global Customer: Fax :+86-10-5862-8288 • Tel:+86-400-890-9989 • <http://www.sinobiological.com>