

# SARS-CoV Nucleoprotein / NP Antibody, Mouse MAb



Sino Biological  
Biological Solution Specialist

Catalog Number: 40143-MM05

## GENERAL INFORMATION

<b>Immunogen:</b>	Recombinant SARS-CoV Nucleoprotein / NP Protein (Catalog#40143-V08B)
<b>Preparation</b>	This antibody was produced from a hybridoma resulting from the fusion of a mouse myeloma with B cells obtained from a mouse immunized with purified, recombinant SARS-CoV Nucleoprotein / NP (Catalog#40143-V08B; NP_828858.1; Met1-Ala422). The IgG fraction of the cell culture supernatant was purified by Protein A affinity chromatography.
<b>Ig Type:</b>	Mouse IgG1
<b>Clone ID:</b>	05
<b>Specificity:</b>	SARS-CoV Nucleoprotein / NP Has cross-reactivity in ELISA and WB with SARS-CoV-2 (2019-nCoV) Nucleoprotein / NP Protein (Cat# 40588-V08B).
<b>Formulation:</b>	0.2 µm filtered solution in PBS
<b>Storage:</b>	This antibody can be stored at 2°C-8°C for one month without detectable loss of activity. Antibody products are stable for twelve months from date of receipt when stored at -20°C to -80°C. Preservative-Free. Avoid repeated freeze-thaw cycles.
<b>Alternative Names:</b>	NP

## APPLICATIONS

<b>Applications:</b>	WB,ELISA,IHC-P,FCM,ICC/IF,IP (Antibody's applications have not been validated with corresponding viruses. Optimal concentrations/dilutions should be determined by the end user.)
----------------------	--

## RECOMMENDED CONCENTRATION

<b>Western Blot</b>	WB: 1:1000-1:5000
<b>ELISA</b>	ELISA: 1:1000-1:2000

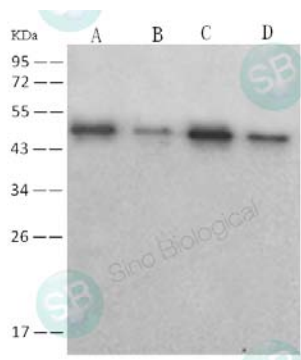
**Please Note: Optimal concentrations/dilutions should be determined by the end user.**

# SARS-CoV Nucleoprotein / NP Antibody, Mouse MAb



Sino Biological  
Biological Solution Specialist

Catalog Number: 40143-MM05



Anti-SARS-NP mouse  
monoclonal antibody at 1:1000 dilution.

Lane A: SARS-CoV NP Protein (Cat#40143-  
V08B) (30ng)

Lane B: SARS-CoV NP Protein (Cat#40143-  
V08B) (5ng)

Lane C: SARS-CoV-2 (2019-nCoV)  
NP Protein (Cat#40588-V08B) (30ng)

Lane D: SARS-CoV-2 (2019-nCoV)  
NP Protein (Cat#40588-V08B) (5ng)

Secondary  
Goat Anti-  
Mouse IgG (H+L)/HRP at 1/10000 dilution.

Developed using the ECL technique.  
Performed under reducing conditions.