

SARS-CoV-2 (2019-nCoV) Spike Antibody, Rabbit MAb

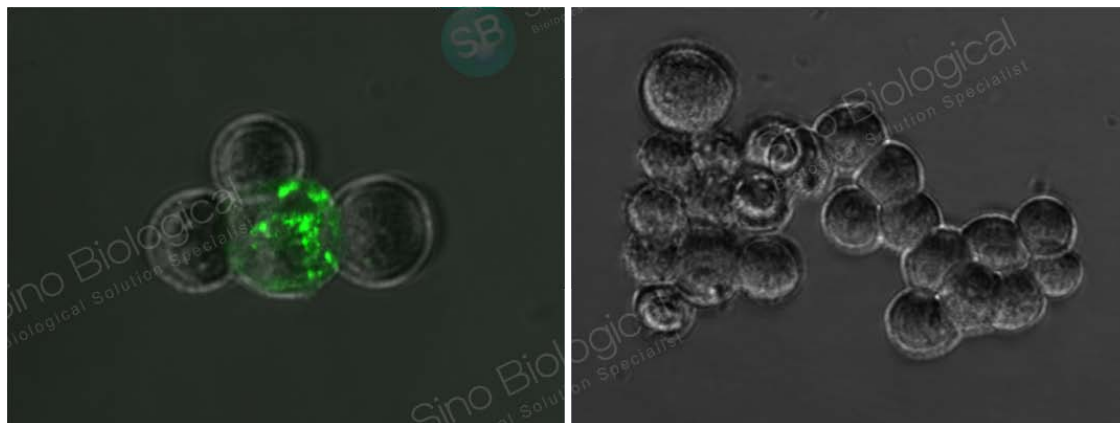


Catalog Number: 40150-R007

EliteRmab® is a registered trademark of Sino Biological Inc.

GENERAL INFORMATION	
Ig Type:	Rabbit IgG
Clone ID:	007
Specificity:	SARS-CoV-2 (2019-nCoV) Spike Protein (S1 Subunit) SARS-CoV-2 (2019-nCoV) Spike Protein (RBD) Has cross-reactivity in ELISA with SARS Coronavirus Spike Protein (S1 Subunit) (Cat# 40150-V08B1), SARS Coronavirus Spike RBD (Cat# 40150-V08B2).
Formulation:	0.2 µm filtered solution in PBS
Storage:	This antibody can be stored at 2°C-8°C for one month without detectable loss of activity. Antibody products are stable for twelve months from date of receipt when stored at -20°C to -80°C. Preservative-Free.
APPLICATIONS	
Applications:	ELISA, FCM, ICC/IF, IHC-P, IP
	(Antibody's applications have not been validated with corresponding viruses. Optimal concentrations/dilutions should be determined by the end user.)
RECOMMENDED CONCENTRATION	
ELISA	ELISA: 1:5000-1:10000

Please Note: Optimal concentrations/dilutions should be determined by the end user.



Immunofluorescence staining of SARS-CoV-2 (2019-nCoV) Spike in ACE2-overexpressed 293T cells, infected (left) or noninfected (right) by 2019-nCoV-Spike pseudovirus (PSV). Cells were blocked with 10% serum, and incubated with SARS-CoV-2 (2019-nCoV) Spike rabbit monoclonal antibody (dilution ratio 1:60) at 37°C for 1 hour. Then cells were stained with the Alexa Fluor®-conjugated Goat Anti-rabbit IgG secondary antibody (green).