

SARS-CoV Spike Antibody, Rabbit PAb, Antigen Affinity Purified

Has cross-reactivity in ELISA and WB with SARS-CoV-2 (2019-nCoV) Spike S1 (Cat# 40591-V08H), SARS-CoV-2 (2019-nCoV) Spike RBD (Cat# 40592-V05H).



Sino Biological
Biological Solution Specialist

Catalog Number: 40150-T62-COV2

GENERAL INFORMATION

Immunogen:	Recombinant SARS-CoV Spike S1 Subunit Protein (Catalog#40150-V08B1)
Preparation	Produced in rabbits immunized with purified, recombinant SARS-CoV Spike S1 Subunit Protein (Catalog#40150-V08B1; AAX16192.1; Met1-Arg667). The specific IgG was purified by SARS-CoV Spike S1 Subunit affinity chromatography.
Ig Type:	Rabbit IgG
Specificity:	SARS-CoV Spike S1 Subunit Protein Has cross-reactivity in ELISA and WB with SARS-CoV-2 (2019-nCoV) Spike S1 (Cat# 40591-V08H) SARS-CoV-2 (2019-nCoV) Spike RBD (Cat# 40592-V05H)
Formulation:	0.2 µm filtered solution in PBS
Storage:	This antibody can be stored at 2°C-8°C for one month without detectable loss of activity. Antibody products are stable for twelve months from date of receipt when stored at -20°C to -80°C. Preservative-Free.

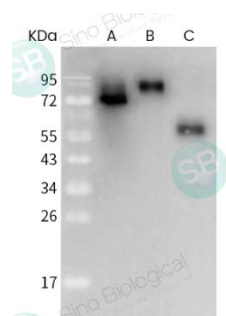
APPLICATIONS

Applications:	WB,ELISA,IHC-P,FCM,ICC/IF,IP
	(Antibody's applications have not been validated with corresponding viruses. Optimal concentrations/dilutions should be determined by the end user.)

RECOMMENDED CONCENTRATION

Western Blot	WB: 1:1000-1:5000
ELISA	ELISA: 1:5000-1:10000

Please Note: Optimal concentrations/dilutions should be determined by the end user.



Anti SARS-CoV S1 rabbit polyclonal antibody at 1:2000 dilution.

Lane A: SARS-CoV Spike S1 (Cat# 40150-V08B1) (5ng)
Lane B: SARS-CoV-2 (2019-nCoV) Spike S1 (Cat# 40591-V08H) (30ng)
Lane C: SARS-CoV-2 (2019-nCoV) Spike RBD (Cat# 40592-V05H) (30ng)

Secondary
Goat Anti-Rabbit IgG (H+L)/HRP at 1/10000 dilution.

Developed using the ECL technique.
Performed under reducing conditions.

Manufactured By Sino Biological Inc.

Tel: 215-583-7898 (US); +86-400-890-9989(Global) • <http://www.sinobiological.com>