

Simian immunodeficiency virus (SIV) (isolate SIVmac251v31523ru28) envelope glycoprotein gp120 Protein (His Tag)

Catalog Number: 40410-V08H



Sino Biological
Biological Solution Specialist

General Information

Gene Name Synonym:

SIV-GP120

Protein Construction:

A DNA sequence encoding the Simian immunodeficiency virus (SIV)(isolate SIVmac251v31523ru28) envelope glycoprotein gp160 Protein(gp120 subunit) (ADH04463.1) (Glu1-Arg461) was expressed with a polyhistidine tag at the C-terminus.

Source: SIV

Expression Host: HEK293 Cells

QC Testing

Purity: > 95 % as determined by SDS-PAGE.

Endotoxin:

< 1.0 EU per µg protein as determined by the LAL method.

Stability:

Samples are stable for up to twelve months from date of receipt at -70 °C

Predicted N terminal: Glu

Molecular Mass:

The recombinant (SIV)(isolate SIVmac251v31523ru28) envelope glycoprotein gp160 Protein(gp120 subunit) consists 472 amino acids and predicts a molecular mass of 54.6 kDa.

Formulation:

Lyophilized from sterile PBS, pH 7.4.

Normally 5 % - 8 % trehalose, mannitol and 0.01% Tween80 are added as protectants before lyophilization. Specific concentrations are included in the hardcopy of COA. Please contact us for any concerns or special requirements.

Usage Guide

Storage:

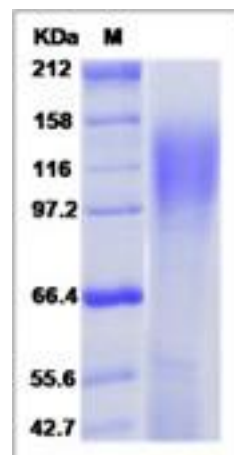
Store it under sterile conditions at -20°C to -80°C upon receiving. Recommend to aliquot the protein into smaller quantities for optimal storage.

Avoid repeated freeze-thaw cycles.

Reconstitution:

Detailed reconstitution instructions are sent along with the products.

SDS-PAGE:



Manufactured By Sino Biological Inc., FOR RESEARCH USE ONLY. NOT FOR USE IN HUMANS.

For US Customer: Fax: 267-657-0217 • Tel: 215-583-7898

Global Customer: Fax :+86-10-5862-8288 • Tel:+86-400-890-9989 • <http://www.sinobiological.com>