

# Simian immunodeficiency virus (SIV) (isolate F236) envelope glycoprotein gp120 Protein (His Tag)

Catalog Number: 40415-V08H



Sino Biological  
Biological Solution Specialist

## General Information

### Gene Name Synonym:

SIV-GP120

### Protein Construction:

A DNA sequence encoding the SIV envelope glycoprotein gp160 (CAA32487.1) extracellular domain (Gln24-Arg531), termed as gp120, was expressed with a polyhistidine tag at the C-terminus.

**Source:** SIV

**Expression Host:** HEK293 Cells

## QC Testing

**Purity:** > 85 % as determined by SDS-PAGE.

### Endotoxin:

< 1.0 EU per µg protein as determined by the LAL method.

### Stability:

Samples are stable for up to twelve months from date of receipt at -70 °C

**Predicted N terminal:** Gln 24

### Molecular Mass:

The recombinant SIV envelope glycoprotein gp120 consists 519 amino acids and predicts a molecular mass of 59.8 kDa.

### Formulation:

Lyophilized from sterile PBS, pH 7.4.

Normally 5 % - 8 % trehalose, mannitol and 0.01% Tween80 are added as protectants before lyophilization. Specific concentrations are included in the hardcopy of COA. Please contact us for any concerns or special requirements.

## Usage Guide

### Storage:

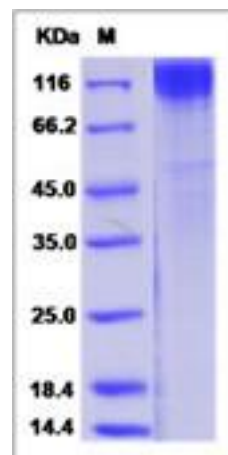
Store it under sterile conditions at -20°C to -80°C upon receiving. Recommend to aliquot the protein into smaller quantities for optimal storage.

**Avoid repeated freeze-thaw cycles.**

### Reconstitution:

Detailed reconstitution instructions are sent along with the products.

## SDS-PAGE:



**Manufactured By Sino Biological Inc., FOR RESEARCH USE ONLY. NOT FOR USE IN HUMANS.**

**For US Customer:** Fax: 267-657-0217 • Tel: 215-583-7898

**Global Customer:** Fax :+86-10-5862-8288 • Tel:+86-400-890-9989 • <http://www.sinobiological.com>