

Dengue virus (DENV) (type 2, strain New Guinea C/PUO-218 hybrid) E / Envelope Protein Antibody, Rabbit PAb, Antigen Affinity Purified

Catalog Number: 40471-T62



Sino Biological
Biological Solution Specialist

GENERAL INFORMATION

Immunogen:	Recombinant Dengue virus (DENV) (type 2, strain New Guinea C/PUO-218 hybrid) E / Envelope Protein (Catalog#40471-V08B)
Preparation	Produced in rabbits immunized with purified, recombinant Dengue virus (DENV) (type 2, strain New Guinea C/PUO-218 hybrid) E / Envelope Protein (Catalog#40471-V08B; AAC59274.1; Phe247-Gly675). Dengue virus (DENV) (type 2, strain New Guinea C/PUO-218 hybrid) E / Envelope Protein specific IgG was purified by Dengue virus (DENV) (type 2, strain New Guinea C/PUO-218 hybrid) E / Envelope Protein affinity chromatography.
Ig Type:	Rabbit IgG
Specificity:	Dengue virus (DENV) (type 2, strain New Guinea C/PUO-218 hybrid) E / Envelope Protein
Formulation:	0.2 µm filtered solution in PBS
Storage:	This antibody can be stored at 2°C-8°C for one month without detectable loss of activity. Antibody products are stable for twelve months from date of receipt when stored at -20°C to -80°C. Preservative-Free. Avoid repeated freeze-thaw cycles.
Alternative Names:	E,Envelope protein

APPLICATIONS

Applications:	WB,ELISA,IHC-P,FCM,ICC/IF,IP
----------------------	------------------------------

RECOMMENDED CONCENTRATION

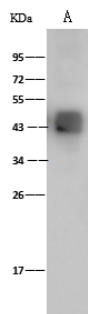
Western Blot	WB: 1:2000-1:10000
ELISA	ELISA: 1:5000-1:10000 This antibody can be used at 1:5000-1:10000 with the appropriate secondary reagents to detect Dengue virus (DENV) (type 2, strain New Guinea C/PUO-218 hybrid) E / Envelope Protein.

Please Note: Optimal concentrations/dilutions should be determined by the end user.

Dengue virus (DENV) (type 2, strain New Guinea C/PUO-218 hybrid) E / Envelope Protein Antibody, Rabbit PAb, Antigen Affinity Purified
Catalog Number: 40471-T62



Sino Biological
Biological Solution Specialist



Anti-Dengue virus (DENV) (type 2, strain New Guinea C/PUO-218 hybrid) E / Envelope Protein (ECD) rabbit polyclonal antibody at 1:2000 dilution
Sample: Dengue virus (DENV) (type 2, strain New Guinea C/PUO-218 hybrid) E / Envelope Protein (ECD, His Tag)
Lane A: 5ng

Secondary
Goat Anti-Rabbit IgG (H+L)/HRP at 1/10000 dilution.

Developed using the ECL technique.
Performed under reducing conditions.