

# SARS-CoV-2 (2019-nCoV) Spike Protein (RBD, mFc Tag)

Catalog Number: 40592-V05H



Sino Biological  
Biological Solution Specialist

## General Information

**Gene Name Synonym:** coronavirus spike; cov spike; ncov RBD; ncov s1; ncov s2; ncov spike; NCP-CoV RBD; NCP-CoV s1; NCP-CoV s2; NCP-CoV Spike; novel coronavirus RBD; novel coronavirus s1; novel coronavirus s2; novel coronavirus spike; RBD; S1; S2; Spike RBD

**Protein Construction:** A DNA sequence encoding the SARS-CoV-2 (2019-nCoV) Spike Protein (RBD) (YP\_009724390.1) (Arg319-Phe541) was expressed with the Fc region of mouse IgG1 at the C-terminus.

**Source:** 2019-nCoV

**Expression Host:** HEK293 Cells

## QC Testing

**Purity:** > 95 % as determined by SDS-PAGE.  
> 95 % as determined by SEC-HPLC.

**Bio Activity:**

1. Measured by its binding ability in a functional ELISA. Immobilized human ACE2 protein (His tag) at 2 $\mu$ g/mL (100 $\mu$ L/well) can bind SARS-CoV-2 (2019-nCoV) Spike Protein (RBD, mFc Tag)(40592-V05H), the EC<sub>50</sub> of SARS-CoV-2 (2019-nCoV) Spike Protein (RBD, mFc Tag) is 15-50 ng/mL.
2. Loaded Human ACE2 Protein (His tag) (Cat. No. 10108-H08H) on SA Biosensor, can bind SARS-CoV-2/2019-nCoV Spike/RBD Protein (RBD, mFc Tag) (Cat. No. 40592-V05H) with an affinity constant of 0.562 nM as determined by Octet RED System.

**Endotoxin:** <1.0 EU per  $\mu$ g protein as determined by the LAL method.

**Predicted N terminal:** Arg 319

**Molecular Mass:** The recombinant SARS-CoV-2 (2019-nCoV) Spike Protein (RBD, mFc Tag) consists of 457 amino acids and predicts a molecular mass of 51.5 kDa.

**Formulation:** Lyophilized from sterile PBS, pH 7.4.  
Normally 5 % - 8 % trehalose, mannitol and 0.01% Tween80 are added as protectants before lyophilization. Specific concentrations are included in the hardcopy of COA. Please contact us for any concerns or special requirements.

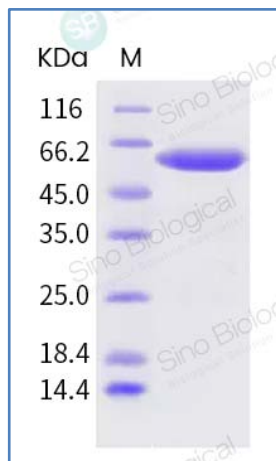
## Usage Guide

**Stability & Storage:** Samples are stable for twelve months from date of receipt at -20 $^{\circ}$ C to -80 $^{\circ}$ C.  
Store it under sterile conditions at -20 $^{\circ}$ C to -80 $^{\circ}$ C upon receiving. Recommend to aliquot the protein into smaller quantities for optimal storage.

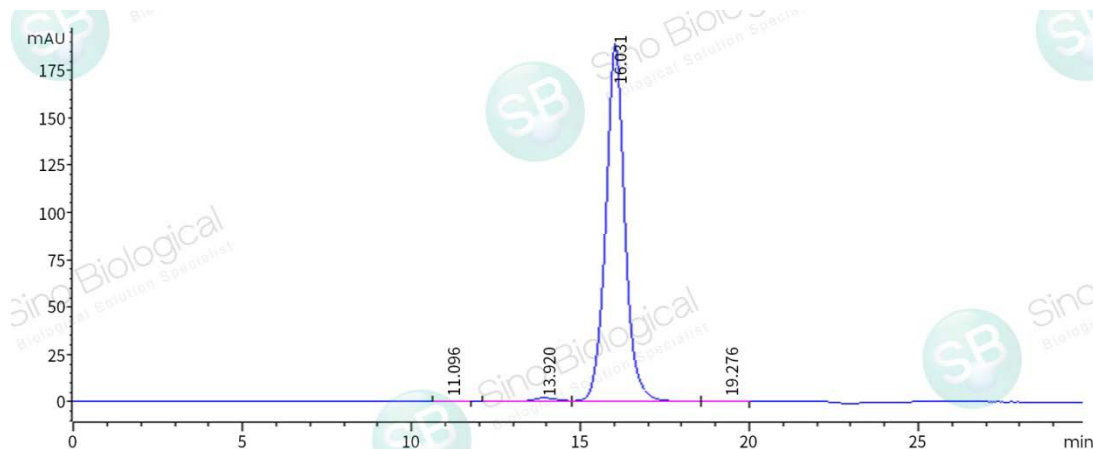
**Avoid repeated freeze-thaw cycles.**

**Reconstitution:** Detailed reconstitution instructions are sent along with the products.

### SDS-PAGE:



### SEC-HPLC:



**For Research Use Only. Not for use in diagnostic or therapeutic procedures.**

**Tel:** +86-400-890-9989 (Global), +1-215-583-7898 (USA), +49(0)6196 9678656 (Europe)

**Website:** <http://www.sinobiological.com>

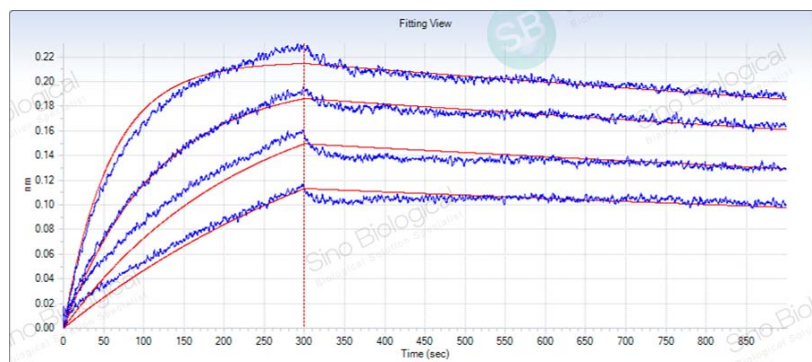
# SARS-CoV-2 (2019-nCoV) Spike Protein (RBD, mFc Tag)

Catalog Number: 40592-V05H



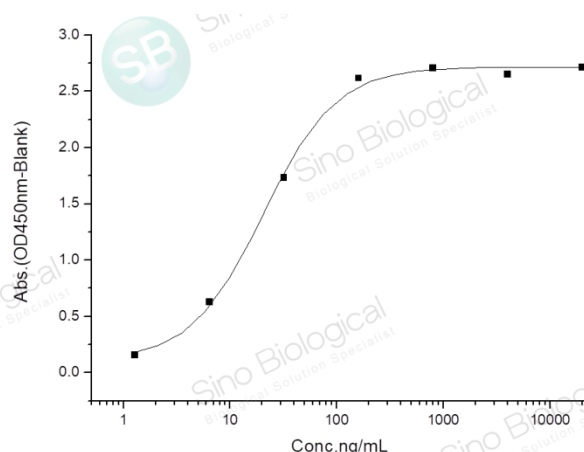
Sino Biological  
Biological Solution Specialist

## Affinity:



Loaded Human ACE2 Protein (His tag) (Cat. No. 10108-H08H) on SA Biosensor, can bind SARS-CoV-2/2019-nCoV Spike/RBD Protein (RBD, mFc Tag) (Cat. No. 40592-V05H) with an affinity constant of 0.562 nM as determined by Octet RED System.

## ELISA -Activity:



Measured by its binding ability in a functional ELISA. Immobilized human ACE2 protein (His tag) at 2 $\mu$ g/mL (100 $\mu$ L/well) can bind 2019-nCoV Spike Protein (RBD, mFc Tag) (40592-V05H), the EC<sub>50</sub> of 2019-nCoV Spike Protein (RBD, mFc Tag) is 15-50ng/mL.

## Protein Description

The spike (S) glycoprotein of coronaviruses contains protrusions that will only bind to certain receptors on the host cell. Known receptors bind S1 are ACE2, angiotensin-converting enzyme 2; DPP4, dipeptidyl peptidase-4; APN, aminopeptidase N; CEACAM, carcinoembryonic antigen-related cell adhesion molecule 1; Sia, sialic acid; O-ac Sia, O-acetylated sialic acid. The spike is essential for both host specificity and viral infectivity. The term 'peplomer' is typically used to refer to a grouping of heterologous proteins on the virus surface that function together. The spike (S) glycoprotein of coronaviruses is known to be essential in the binding of the virus to the host cell at the advent of the infection process. It's been reported that 2019-nCoV can infect the human respiratory epithelial cells through interaction with the human ACE2 receptor. The spike protein is a large type I transmembrane protein containing two subunits, S1 and S2. S1 mainly contains a receptor binding domain (RBD), which is responsible for recognizing the cell surface receptor. S2 contains basic elements needed for the membrane fusion. The S protein plays key parts in the induction of neutralizing-antibody and T-cell responses, as well as protective immunity. The main functions for the Spike protein are summarized as: Mediate receptor binding and membrane fusion; Defines the range of the hosts and specificity of the virus; Main component to bind with the neutralizing antibody; Key target for vaccine design; Can be transmitted between different hosts through gene recombination or mutation of the receptor binding domain (RBD), leading to a higher mortality rate.

## References

1. Shen S, *et al.* (2007) Expression, glycosylation, and modification of the spike (S) glycoprotein of SARS CoV. *Methods Mol Biol.* 379: 127-35.
2. Du L, *et al.* (2009) The spike protein of SARS-CoV--a target for vaccine and therapeutic development. *Nat Rev Microbiol.* 7 (3): 226-36.
3. Xiao X, *et al.* (2004) The SARS-CoV S glycoprotein. *Cell Mol Life Sci.* 61 (19-20): 2428-30.