

# CD14 Antibody (PE), Rabbit MAb



Sino Biological  
Biological Solution Specialist

Catalog Number: 50023-R503-P

EliteRmab® is a registered trademark of Sino Biological Inc.

GENERAL INFORMATION	
Immunogen:	Recombinant Mouse CD14 protein (Catalog#50023-M08H)
Reagents:	PE-conjugated Rabbit monoclonal antibody
Preparation	This antibody was obtained from a rabbit immunized with purified, recombinant Mouse CD14 (rM CD14; Catalog#50023-M08H; NP_033971.1; Met1-Pro345) and conjugated with PE under optimum conditions, the unreacted PE was removed.
Ig Type:	Rabbit IgG
Clone ID:	503
Specificity:	Mouse CD14
Concentration:	2 µl/Test, 0.1 mg/ml
Formulation:	Aqueous solution containing 0.5% BSA and 0.09% sodium azide
Storage:	This antibody is stable for 12 months from date of receipt when stored at 2°C-8°C. Protected from prolonged exposure to light. Do not freeze! Sodium azide is toxic to cells and should be disposed of properly. Flush with large volumes of water during disposal.
APPLICATIONS	
Applications:	FCM
RECOMMENDED CONCENTRATION	

**Please Note: Optimal concentrations/dilutions should be determined by the end user.**

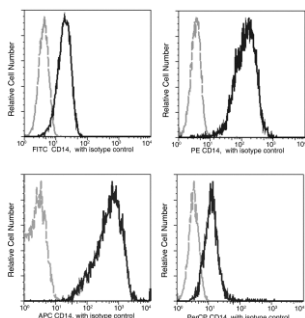
# CD14 Antibody (PE), Rabbit MAb



Sino Biological  
Biological Solution Specialist

Catalog Number: 50023-R503-P

EliteRmab® is a registered trademark of Sino Biological Inc.



Profile of anti-CD14 reactivity on Raw264.7 cells analyzed by flow cytometry.

Flow cytometry was performed on a BD FACSCalibur flow cytometry system. Please refer to [www.sinobiological.com/Flow-Cytometry-FACS-Protocols-a-750.html](http://www.sinobiological.com/Flow-Cytometry-FACS-Protocols-a-750.html) for technical protocols.