

Mouse CCL20 / MIP-3 alpha / MIP3A protein



Sino Biological
Biological Solution Specialist

Catalog Number: 50048-MNAE

General Information

Gene Name Synonym:

CKb4; exodus-1; LARC; MIP-3A; MIP-3[a]; MIP3A; Scya20; ST38

Protein Construction:

A DNA sequence encoding the mouse CCL20 (NP_058656.1) (Ala28-Met97) was expressed with an initial Met.

Source: Mouse

Expression Host: E. coli

QC Testing

Purity: > 95 % as determined by SDS-PAGE.

Endotoxin:

Please contact us for more information.

Stability:

Samples are stable for up to twelve months from date of receipt at -70 °C

Predicted N terminal: Met

Molecular Mass:

The recombinant mouse CCL20 consists of 71 amino acids and predicts a molecular mass of 8.1 kDa.

Formulation:

Lyophilized from sterile PBS.

Normally 5 % - 8 % trehalose, mannitol and 0.01% Tween80 are added as protectants before lyophilization. Specific concentrations are included in the hardcopy of COA. Please contact us for any concerns or special requirements.

Usage Guide

Storage:

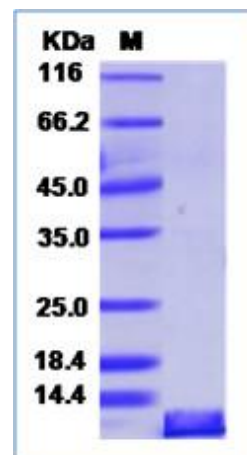
Store it under sterile conditions at -20°C to -80°C upon receiving. Recommend to aliquot the protein into smaller quantities for optimal storage.

Avoid repeated freeze-thaw cycles.

Reconstitution:

Detailed reconstitution instructions are sent along with the products.

SDS-PAGE:



Protein Description

Chemokine (C-C motif) ligand 20 (CCL20) or liver activation regulated chemokine (LARC) or Macrophage Inflammatory Protein-3 (MIP3A) is a small cytokine belonging to the CC chemokine family that attracts immature dendritic cells and memory T lymphocytes, both expressing CCR6. Depending on the cell type, this chemokine was found to be inducible by cytokines (IL-1 β) and by bacterial, viral, or plant products (including LPS, dsRNA, and PMA). MIP3A / CCL20 is Expressed predominantly in the liver, lymph nodes, appendix, peripheral blood lymphocytes, and fetal lung. Low levels of MIP3A / CCL20 has been seen in thymus, prostate, testis, small intestine and colon. As a chemotactic factor, MIP3A / CCL20 attracts lymphocytes and, slightly, neutrophils, but not monocytes. This chemokine may Inhibit proliferation of myeloid progenitors in colony formation assays and it may be involved in formation and function of the mucosal lymphoid tissues by attracting lymphocytes and dendritic cells towards epithelial cells. Its C-terminal processed forms have been shown to be equally chemotactically active for leukocytes. Chemokine CCL20 was shown to play a role in colorectal cancer (CRC) pathogenesis.

References

1. Vicinus B, *et al.* (2012) miR-21 functionally interacts with the 3'UTR of chemokine CCL20 and down-regulates CCL20 expression in miR-21 transfected colorectal cancer cells. *Cancer Lett.* 316(1): 105-12.
2. Ding X, *et al.* (2012) High Expression of CCL20 Is Associated with Poor Prognosis in Patients with Hepatocellular Carcinoma after Curative Resection. *J Gastrointest Surg.* 16(4): 828-36.
3. Ivison SM, *et al.* (2010) Oxidative stress enhances IL-8 and inhibits CCL20 production from intestinal epithelial cells in response to bacterial flagellin. *Am J Physiol Gastrointest Liver Physiol.* 299(3): 733-41.

Manufactured By Sino Biological Inc., FOR RESEARCH USE ONLY. NOT FOR USE IN HUMANS.

For US Customer: Fax: 267-657-0217 • Tel: 215-583-7898

Global Customer: Fax :+86-10-5862-8288 • Tel:+86-400-890-9989 • <http://www.sinobiological.com>