

ENPEP / Aminopeptidase A Antibody, Rabbit PAb, Antigen Affinity Purified



Sino Biological
Biological Solution Specialist

Catalog Number: 50082-T24

GENERAL INFORMATION

Immunogen:	Recombinant Mouse ENPEP / Aminopeptidase A Protein (Catalog#50082-M07B)
Preparation	Produced in rabbits immunized with purified, recombinant Mouse ENPEP / Aminopeptidase A (rM ENPEP / Aminopeptidase A; Catalog#50082-M07B; P16406; Arg41-Pro945). ENPEP / Aminopeptidase A specific IgG was purified by Mouse ENPEP / Aminopeptidase A affinity chromatography.
Ig Type:	Rabbit IgG
Specificity:	Mouse ENPEP / Aminopeptidase A
Formulation:	0.2 µm filtered solution in PBS
Storage:	This antibody can be stored at 2°C-8°C for one month without detectable loss of activity. Antibody products are stable for twelve months from date of receipt when stored at -20°C to -80°C. Preservative-Free. Sodium azide is recommended to avoid contamination (final concentration 0.05%-0.1%). It is toxic to cells and should be disposed of properly. Avoid repeated freeze-thaw cycles.

APPLICATIONS

Applications:	ELISA, IHC-P
----------------------	--------------

RECOMMENDED CONCENTRATION

IHC-P	IHC-P: 1:2500-1:10000
ELISA	ELISA: 1:5000-1:10000 This antibody can be used at 1:5000-1:10000 with the appropriate secondary reagents to detect Mouse ENPEP / Aminopeptidase A.

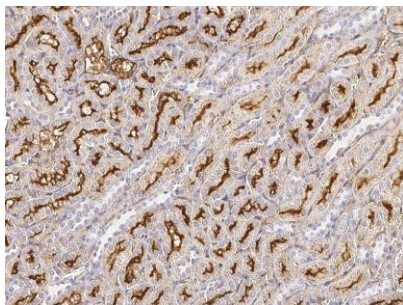
Please Note: Optimal concentrations/dilutions should be determined by the end user.

ENPEP / Aminopeptidase A Antibody, Rabbit PAb, Antigen Affinity Purified



Sino Biological
Biological Solution Specialist

Catalog Number: 50082-T24



Immunochemical staining of mouse ENPEP in mouse kidney with rabbit polyclonal antibody (1:10000, formalin-fixed paraffin embedded sections).