

# Mouse TREM-2 / TREM2 Protein (Fc Tag)



Sino Biological  
Biological Solution Specialist

Catalog Number: 50149-M02H

## General Information

### Gene Name Synonym:

TREM-2; Trem2a; Trem2b; Trem2c

### Protein Construction:

A DNA sequence encoding the mouse Trem2 (NP\_112544.1) (Met1-Pro168) was expressed with the Fc region of human IgG1 at the C-terminus.

**Source:** Mouse

**Expression Host:** HEK293 Cells

## QC Testing

**Purity:** > 90 % as determined by SDS-PAGE.

### Endotoxin:

< 1.0 EU per µg protein as determined by the LAL method.

### Stability:

Samples are stable for up to twelve months from date of receipt at -70 °C

**Predicted N terminal:** Leu 19

### Molecular Mass:

The recombinant mouse Trem2 consists 389 amino acids and predicts a molecular mass of 43.4 kDa.

### Formulation:

Lyophilized from sterile PBS, pH 7.4.

Normally 5 % - 8 % trehalose, mannitol and 0.01% Tween80 are added as protectants before lyophilization. Specific concentrations are included in the hardcopy of COA. Please contact us for any concerns or special requirements.

## Usage Guide

### Storage:

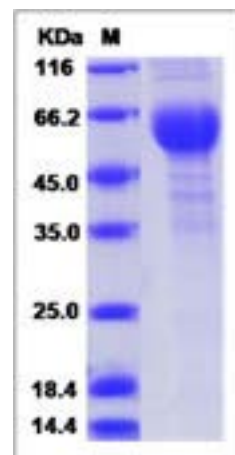
Store it under sterile conditions at -20°C to -80°C upon receiving. Recommend to aliquot the protein into smaller quantities for optimal storage.

**Avoid repeated freeze-thaw cycles.**

### Reconstitution:

Detailed reconstitution instructions are sent along with the products.

## SDS-PAGE:



## Protein Description

Triggering receptor expressed on myeloid cells 2 ( TREM2 ) is a single Ig domain receptor. It is expressed on macrophages and dendritic cells but not on granulocytes or monocytes. Its expression is most abundant in the basal ganglia, corpus callosum, medulla oblongata and spinal cord, and microglial cells are the major TREM2-producing cell type in the central nervous system (CNS). TREM2 may play a role in chronic inflammations and may stimulate production of constitutive rather than inflammatory chemokines and cytokines. TREM2 forms a receptor signaling complex with TYROBP and triggers activation of the immune responses in macrophages and dendritic cells. It also associates with the signal adapter protein, DAP12, which has a cytoplasmic ITAM, leading to the subsequent activation of cytoplasmic tyrosine kinases. TREM2 is both required and sufficient for competent uptake of apoptotic neuronal cells. TREM2 and TREM2-L form a receptor-ligand pair connecting microglia with apoptotic neurons, directing removal of damaged cells to allow repair. Deficiency of the adapter protein DAP12 or its associated receptor TREM2 is associated with abnormal osteoclast development in humans. Defects in TREM2 are causes of PLOSL, also known as NHD. In addition, TREM2 signaling is also an important pathway to promote healing of wounds in the colon where stem cell replacement is necessary.

## References

1.Bouchon, A. et al., 2000, J. Immunol. 164: 4991-4995. 2.Paloneva, J. et al., 2002, Am. J. Hum. Genet. 71:656-662. 3.Prada, I. et al., 2006, Neuroscience. 140 (4): 1139-48.

Manufactured By Sino Biological Inc., FOR RESEARCH USE ONLY. NOT FOR USE IN HUMANS.

For US Customer: Fax: 267-657-0217 • Tel: 215-583-7898

Global Customer: Fax :+86-10-5862-8288 • Tel:+86-400-890-9989 • <http://www.sinobiological.com>