

CXCL9 / MIG Antibody, Rabbit PAb, Antigen Affinity Purified



Sino Biological
Biological Solution Specialist

Catalog Number: 50155-T24

GENERAL INFORMATION	
Immunogen:	Recombinant Mouse CXCL9 / MIG Protein (Catalog#50155-MNAE)
Preparation	Produced in rabbits immunized with purified, recombinant Mouse CXCL9 / MIG (rM CXCL9 / MIG; Catalog#50155-MNAE; P18340; Thr22-Thr126). CXCL9 / MIG specific IgG was purified by Mouse CXCL9 / MIG affinity chromatography.
Ig Type:	Rabbit IgG
Specificity:	Mouse CXCL9 / MIG
Formulation:	PBS, pH7.0 with 0.03% Proclin300
Storage:	This antibody can be stored at 2°C-8°C for one month without detectable loss of activity. Antibody products are stable for twelve months from date of receipt when stored at -20°C to -80°C. Avoid repeated freeze-thaw cycles.
APPLICATIONS	
Applications:	ELISA,IHC-P
RECOMMENDED CONCENTRATION	
IHC-P	IHC-P: 1:500-1:2000
ELISA	ELISA: 1:5000-1:10000 This antibody can be used at 1:5000-1:10000 with the appropriate secondary reagents to detect Mouse CXCL9 / MIG.

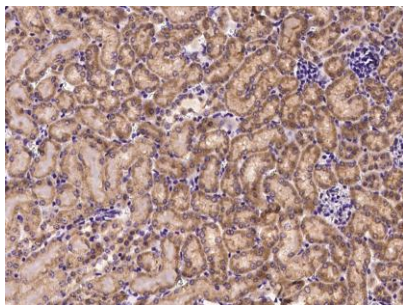
Please Note: Optimal concentrations/dilutions should be determined by the end user.

CXCL9 / MIG Antibody, Rabbit PAb, Antigen Affinity Purified

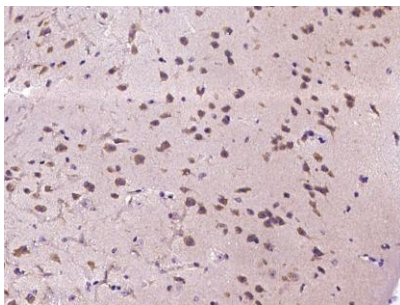
Catalog Number: 50155-T24



Sino Biological
Biological Solution Specialist



Immunohistochemical staining of mouse CXCL9 in mouse kidney with rabbit polyclonal antibody at 1:1000 dilution, formalin-fixed paraffin embedded sections.



Immunohistochemical staining of mouse CXCL9 in mouse brain with rabbit polyclonal antibody at 1:1000 dilution, formalin-fixed paraffin embedded sections.