

# Mouse S100A6 Protein

Catalog Number: 50229-MNAE



Sino Biological  
Biological Solution Specialist

## General Information

### Gene Name Synonym:

2A9; 5B10; Cacy; CALCYCLIN; PRA

### Protein Construction:

A DNA sequence encoding the mouse S100A6 (NP\_035443.1) (Met 1-Lys 89) was expressed.

**Source:** Mouse

**Expression Host:** E. coli

## QC Testing

**Purity:** > 98 % as determined by SDS-PAGE

### Endotoxin:

Please contact us for more information.

### Stability:

Samples are stable for up to twelve months from date of receipt at -70 °C

**Predicted N terminal:** Met

### Molecular Mass:

The recombinant mouse S100A6 consisting of 89 amino acids and has a calculated molecular mass of 10 kDa as estimated in SDS-PAGE under reducing conditions.

### Formulation:

Lyophilized from sterile PBS, pH 7.4

Normally 5 % - 8 % trehalose, mannitol and 0.01% Tween80 are added as protectants before lyophilization. Specific concentrations are included in the hardcopy of COA. Please contact us for any concerns or special requirements.

## Usage Guide

### Storage:

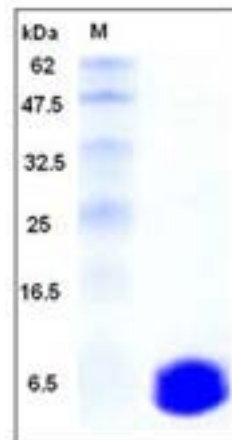
Store it under sterile conditions at -20°C to -80°C upon receiving. Recommend to aliquot the protein into smaller quantities for optimal storage.

**Avoid repeated freeze-thaw cycles.**

### Reconstitution:

Detailed reconstitution instructions are sent along with the products.

## SDS-PAGE:



## Protein Description

S100 protein is a family of low molecular weight protein found in vertebrates characterized by two EF-hand calcium-binding motifs. There are at least 21 different S100 proteins, and the name is derived from the fact that the protein is 100% soluble in ammonium sulfate at neutral pH. Most S100 proteins are disulfide-linked homodimers, and are normally present in cells derived from the neural crest, chondrocytes, macrophages, dendritic cells, etc. S100 proteins have been implicated in a variety of intracellular and extracellular functions. They are involved in regulation of protein phosphorylation, transcription factors, the dynamics of cytoskeleton constituents, enzyme activities, cell growth and differentiation, and the inflammatory response. S100A6 (S100 calcium binding protein A6) is a member of the S100 family of proteins, and functions in prolactin secretion, and exocytosis. Chromosomal rearrangements and altered expression of S100A6 have been implicated in melanoma.

## References

1. Schfer, B.W. et al., 1996, Trends Biochem. Sci. 21 (4): 134-140.
2. Donato, R. et al., 2003, Microsc. Res. Tech. 60 (6): 540-551.
3. Nowotny, M. et al., 2003, J. Biol. Chem. 278 (29): 26923-26928.

Manufactured By Sino Biological Inc., FOR RESEARCH USE ONLY. NOT FOR USE IN HUMANS.

For US Customer: Fax: 267-657-0217 • Tel: 215-583-7898

Global Customer: Fax: +86-10-5862-8288 • Tel: +86-400-890-9989 • <http://www.sinobiological.com>