

BDNF/ANON2 Antibody, Rabbit MAb



Sino Biological
Biological Solution Specialist

Catalog Number: 50240-R010

EliteRmab® is a registered trademark of Sino Biological Inc.

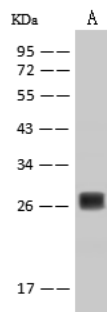
GENERAL INFORMATION	
Immunogen:	Recombinant Mouse BDNF/ANON2 Protein (Catalog#50240-MNAS)
Preparation	This antibody was obtained from a rabbit immunized with purified, recombinant Mouse BDNF/ANON2 (rM BDNF/ANON2; Catalog#50240-MNAS; P21237; Met1-Arg249).
Ig Type:	Rabbit IgG
Clone ID:	010
Specificity:	Mouse BDNF/ANON2
Formulation:	0.2 µm filtered solution in PBS
APPLICATIONS	
Applications:	WB, ELISA
RECOMMENDED CONCENTRATION	
Western Blot	WB: 1:500-1:2000
ELISA	ELISA: 1:5000-1:10000 This antibody can be used at 1:5000-1:10000 with the appropriate secondary reagents to detect Mouse BDNF/ANON2.

Please Note: Optimal concentrations/dilutions should be determined by the end user.



Catalog Number: 50240-R010

EliteRmab® is a registered trademark of Sino Biological Inc.



Anti-BDNF rabbit monoclonal antibody at
1:500 dilution
Lane A: K562 Whole Cell Lysate

Lysates/proteins at 30 µg per lane.
Secondary
Goat Anti-Rabbit IgG (H+L)/HRP at 1/10000
dilution.

Developed using the ECL technique.
Performed under reducing conditions.

Predicted band size: 27 kDa
Observed band size: 27 kDa