

REN1 / Renin-1 Antibody, Rabbit MAb



Sino Biological
Biological Solution Specialist

Catalog Number: 50279-R001

EliteRmab® is a registered trademark of Sino Biological Inc.

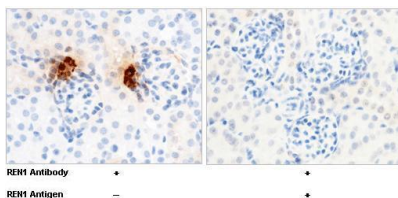
GENERAL INFORMATION	
Immunogen:	Recombinant Mouse REN1 protein (Catalog#50279-M08H)
Preparation	This antibody was obtained from a rabbit immunized with purified, recombinant Mouse REN1 (rM REN1; Catalog#50279-M08H; NP_112469.1; Met 1-Arg 402).
Ig Type:	Rabbit IgG
Clone ID:	1
Specificity:	Mouse REN1 / Renin-1
	No cross-reactivity with in ELISA Mouse Cathepsin D / CTSD
Formulation:	0.2 µm filtered solution in PBS
Storage:	This antibody can be stored at 2°C-8°C for one month without detectable loss of activity. Antibody products are stable for twelve months from date of receipt when stored at -20°C to -80°C. Preservative-Free. Sodium azide is recommended to avoid contamination (final concentration 0.05%-0.1%). It is toxic to cells and should be disposed of properly. Avoid repeated freeze-thaw cycles.
APPLICATIONS	
Applications:	ELISA, IHC-P
RECOMMENDED CONCENTRATION	
IHC-P	IHC-P: 1:100-1:500
ELISA	ELISA: 1:5000-1:10000 This antibody can be used at 1:5000-1:10000 with the appropriate secondary reagents to detect Mouse REN1.

Please Note: Optimal concentrations/dilutions should be determined by the end user.



Catalog Number: 50279-R001

EliteRmab® is a registered trademark of Sino Biological Inc.



Immunochemical staining of mouse REN1 in mouse kidney with rabbit monoclonal antibody (1:200, formalin-fixed paraffin embedded sections). Positive staining was localized to juxtaglomerular cell. The left panel: tissue incubated with primary antibody; The right panel: tissue incubated with the mixture of primary antibody and antigen (recombinant protein).