

LDLR Antibody, Rabbit MAb



Sino Biological
Biological Solution Specialist

Catalog Number: 50305-R004

EliteRmab® is a registered trademark of Sino Biological Inc.

GENERAL INFORMATION

Immunogen:	Recombinant Mouse LDLR Protein (Catalog#50305-M08H)
Preparation	This antibody was obtained from a rabbit immunized with purified, recombinant Mouse LDLR (rM LDLR; Catalog#50305-M08H; NP_034830.2; Met1-Arg790).
Ig Type:	Rabbit IgG
Clone ID:	004
Specificity:	Mouse LDLR
Formulation:	0.2 µm filtered solution in PBS
Storage:	This antibody can be stored at 2°C-8°C for one month without detectable loss of activity. Antibody products are stable for twelve months from date of receipt when stored at -20°C to -80°C. Preservative-Free. Avoid repeated freeze-thaw cycles.
Alternative Names:	Hlb301

APPLICATIONS

Applications:	ICC/IF
----------------------	--------

RECOMMENDED CONCENTRATION

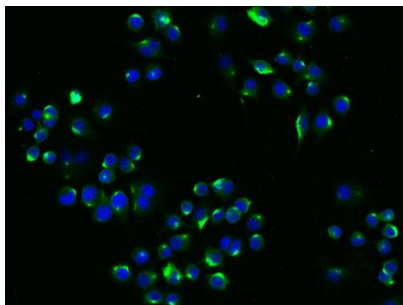
ICC/IF	ICC/IF: 1:20-1:100
---------------	--------------------

Please Note: Optimal concentrations/dilutions should be determined by the end user.



Catalog Number: 50305-R004

EliteRmab® is a registered trademark of Sino Biological Inc.



Immunofluorescence staining of mLDLR in RAW264.7 cells. Cells were fixed with 4% PFA, blocked with 10% serum, and incubated with rabbit anti-mouse mLDLR monoclonal antibody (dilution ratio 1:60) at 4°C overnight. Then cells were stained with the Alexa Fluor®488-conjugated Goat Anti-rabbit IgG secondary antibody (green) and counterstained with DAPI (blue). Positive staining was localized to Cytoplasm.