

LDLR / LDL Receptor Antibody (PE), Rabbit MAb

Catalog Number: 50305-R032-P



Sino Biological
Biological Solution Specialist

EliteRmab® is a registered trademark of Sino Biological Inc.

GENERAL INFORMATION

Immunogen:	Recombinant Mouse LDLR / LDL Receptor protein (Catalog#50305-M08H)
Reagents:	PE-conjugated Rabbit monoclonal antibody
Preparation	This antibody was obtained from a rabbit immunized with purified, recombinant Mouse LDLR / LDL Receptor (rM LDLR / LDL Receptor; Catalog#50305-M08H; NP_034830.2; Met 1-Arg 790) and conjugated with PE under optimum conditions, the unreacted PE was removed.
Ig Type:	Rabbit IgG
Clone ID:	032
Specificity:	Mouse LDLR / LDL Receptor
Concentration:	5 µl/Test, 0.1 mg/ml
Formulation:	PBS solution containing 0.5% BSA and 0.03%ProClin300
Storage:	This antibody can be stored at 2℃-8℃ for twelve months without detectable loss of activity. Protected from prolonged exposure to light. Do not freeze !
Alternative Names:	LDLR

APPLICATIONS

Applications:	FCM
----------------------	-----

RECOMMENDED CONCENTRATION

Please Note: Optimal concentrations/dilutions should be determined by the end user.

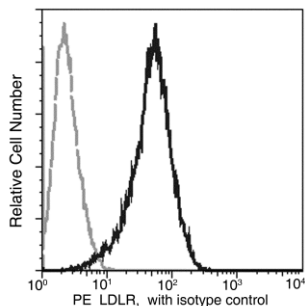
LDLR / LDL Receptor Antibody (PE), Rabbit MAb

Catalog Number: 50305-R032-P



Sino Biological
Biological Solution Specialist

EliteRmab® is a registered trademark of Sino Biological Inc.



Profile of anti-LDLR reactivity on Raw264.7 cells analyzed by flow cytometry. Cells should be Fc-blocked by treatment with Mouse BD Fc Block™ purified anti-CD16/CD32 mAb 2.4G2 (Cat. No. 553141) prior to staining, washed, then stained with PE Rabbit anti-LDLR.

Flow cytometry was performed on a BD FACSCalibur flow cytometry system. Please refer to www.sinobiological.com/Flow-Cytometry-FACS-Protocols-a-750.html for technical protocols.