

LDLR / LDL Receptor Antibody (PE), Rabbit MAb



Sino Biological
Biological Solution Specialist

Catalog Number: 50305-R032-P

EliteRmab® is a registered trademark of Sino Biological Inc.

GENERAL INFORMATION

| | |
|---------------------------|---------------------------------------------------------------------------------------------------------------------------------------------------------------------------------------------------------------------------------------------------------------------------------|
| Immunogen: | Recombinant Mouse LDLR / LDL Receptor protein (Catalog#50305-M08H) |
| Reagents: | PE-conjugated Rabbit monoclonal antibody |
| Preparation | This antibody was obtained from a rabbit immunized with purified, recombinant Mouse LDLR / LDL Receptor (rM LDLR / LDL Receptor; Catalog#50305-M08H; NP_034830.2; Met 1-Arg 790) and conjugated with PE under optimum conditions, the unreacted PE was removed. |
| Ig Type: | Rabbit IgG |
| Clone ID: | 032 |
| Specificity: | Mouse LDLR / LDL Receptor |
| Concentration: | 5 µl/Test, 0.1 mg/ml |
| Formulation: | Aqueous solution containing 0.5% BSA and 0.1% sodium azide |
| Storage: | This antibody can be stored at 2°C-8°C for twelve months without detectable loss of activity. Protected from prolonged exposure to light. Do not freeze ! Sodium azide is toxic to cells and should be disposed of properly. Flush with large volumes of water during disposal. |
| Alternative Names: | Hlb301 |

APPLICATIONS

| | |
|----------------------|-----|
| Applications: | FCM |
|----------------------|-----|

Please Note: Optimal concentrations/dilutions should be determined by the end user.

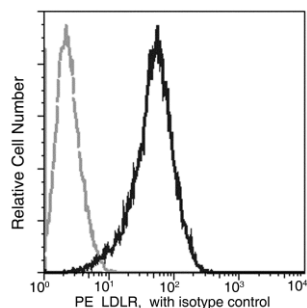
LDLR / LDL Receptor Antibody (PE), Rabbit MAb

Catalog Number: 50305-R032-P



Sino Biological
Biological Solution Specialist

EliteRmab® is a registered trademark of Sino Biological Inc.



Profile of anti-LDLR reactivity on Raw264.7 cells analyzed by flow cytometry. Cells should be Fc-blocked by treatment with Mouse BD Fc Block™ purified anti-CD16/CD32 mAb 2.4G2 (Cat. No. 553141) prior to staining, washed, then stained with PE Rabbit anti-LDLR.

Flow cytometry was performed on a BD FACSCalibur flow cytometry system. Please refer to www.sinobiological.com/Flow-Cytometry-FACS-Protocols-a-750.html for technical protocols.