

Mouse Serpinb6b Protein (His Tag)

Catalog Number: 50371-M08B



Sino Biological
Biological Solution Specialist

General Information

Gene Name Synonym:

NK13; ovalbumin; Spi12

Protein Construction:

A DNA sequence encoding the mouse SERPINB6B (NP_035584.1) (Met 1-Pro 377) was expressed, with a polyhistidine tag at the C-terminus.

Source: Mouse

Expression Host: Baculovirus-Insect Cells

QC Testing

Purity: > 92 % as determined by SDS-PAGE

Endotoxin:

< 1.0 EU per µg of the protein as determined by the LAL method

Stability:

Samples are stable for up to twelve months from date of receipt at -70 °C

Predicted N terminal: Met 1

Molecular Mass:

The recombinant mouse SERPINB6B consists of 387 amino acids and has a calculated molecular mass of 44 kDa. It migrates as an approximately 43 kDa band in SDS-PAGE under reducing conditions.

Formulation:

Lyophilized from sterile 50mM Tris, 100mM NaCl, pH 7.0, 10% gly

Normally 5 % - 8 % trehalose, mannitol and 0.01% Tween80 are added as protectants before lyophilization. Specific concentrations are included in the hardcopy of COA. Please contact us for any concerns or special requirements.

Usage Guide

Storage:

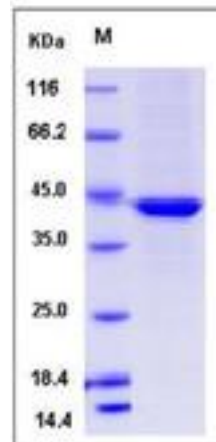
Store it under sterile conditions at -20°C to -80°C upon receiving. Recommend to aliquot the protein into smaller quantities for optimal storage.

Avoid repeated freeze-thaw cycles.

Reconstitution:

Detailed reconstitution instructions are sent along with the products.

SDS-PAGE:



References

- 1.Morgenstern KA, *et al.* (1994) Complementary DNA cloning and kinetic characterization of a novel intracellular serine proteinase inhibitor: mechanism of action with trypsin and factor Xa as model proteinases. *Biochemistry*. 33(11): 3432-41.
- 2.Strik MC, *et al.* (2004) Intracellular serpin SERPINB6 (PI6) is abundantly expressed by human mast cells and forms complexes with beta-tryptase monomers. *Blood*.103(7): 2710-7.
- 3.Scott FL, *et al.* (2007) SerpinB6 is an inhibitor of kallikrein-8 in keratinocytes. *J Biochem*. 142(4): 435-42.

Manufactured By Sino Biological Inc., FOR RESEARCH USE ONLY. NOT FOR USE IN HUMANS.

For US Customer: Fax: 267-657-0217 • Tel: 215-583-7898

Global Customer: Fax :+86-10-5862-8288 • Tel:+86-400-890-9989 • <http://www.sinobiological.com>