

CD31/PECAM-1 Antibody (APC), Rabbit MAb



Sino Biological
Biological Solution Specialist

Catalog Number: 50408-R008-A

EliteRmab® is a registered trademark of Sino Biological Inc.

GENERAL INFORMATION	
Immunogen:	Recombinant Mouse CD31/PECAM-1 Protein (Catalog#50408-M08H)
Reagents:	APC-conjugated Rabbit monoclonal antibody
Preparation	This antibody was obtained from a rabbit immunized with purified, recombinant Mouse CD31/PECAM-1 (rM CD31/PECAM-1; Catalog#50408-M08H; NP_033868.3; Met1-Lys590) and conjugated with APC under optimum conditions, the unreacted APC was removed.
Ig Type:	Rabbit IgG
Clone ID:	008
Specificity:	Mouse CD31/PECAM-1
Concentration:	5 µl/Test, 0.1 mg/ml
Formulation:	Aqueous solution containing 0.5% BSA and 0.09% sodium azide
Storage:	This antibody is stable for 12 months from date of receipt when stored at 2°C-8°C. Protected from prolonged exposure to light. Do not freeze! Sodium azide is toxic to cells and should be disposed of properly. Flush with large volumes of water during disposal.
APPLICATIONS	
Applications:	FCM
RECOMMENDED CONCENTRATION	

Please Note: Optimal concentrations/dilutions should be determined by the end user.

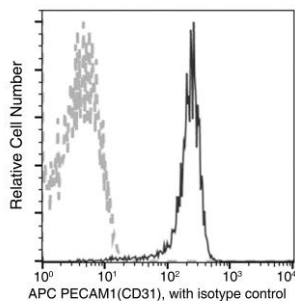
CD31/PECAM-1 Antibody (APC), Rabbit MAb

Catalog Number: 50408-R008-A



Sino Biological
Biological Solution Specialist

EliteRmab® is a registered trademark of Sino Biological Inc.



Flow cytometric analysis of Mouse PECAM1(CD31) expression on BABL/c splenocytes. Cells were stained with APC-conjugated anti-Mouse PECAM1(CD31). The fluorescence histograms were derived from gated events with the forward and side light-scatter characteristics of intact cells.

Flow cytometry was performed on a BD FACSCalibur flow cytometry system. Please refer to www.sinobiological.com/Flow-Cytometry-FACS-Protocols-a-750.html for technical protocols.