

LIFR Antibody, Rabbit PAb, Antigen Affinity Purified



Sino Biological
Biological Solution Specialist

Catalog Number: 50423-T48

GENERAL INFORMATION

Immunogen:	Recombinant Mouse LIFR Protein (Catalog#50423-M08H)
Preparation	Produced in rabbits immunized with purified, recombinant Mouse LIFR (rM LIFR; Catalog#50423-M08H; NP_038612.1; Met1-Ser828). LIFR specific IgG was purified by Mouse LIFR affinity chromatography.
Ig Type:	Rabbit IgG
Specificity:	Mouse LIFR
Formulation:	0.2 µm filtered solution in PBS
Storage:	This antibody can be stored at 2°C-8°C for one month without detectable loss of activity. Antibody products are stable for twelve months from date of receipt when stored at -20°C to -80°C. Preservative-Free. Avoid repeated freeze-thaw cycles.
Alternative Names:	LIFR

APPLICATIONS

Applications:	WB, ELISA
---------------	-----------

RECOMMENDED CONCENTRATION

Western Blot	WB: 1:500-1:2000
ELISA	ELISA: 1:5000-1:10000 This antibody can be used at 1:5000-1:10000 with the appropriate secondary reagents to detect Mouse LIFR.

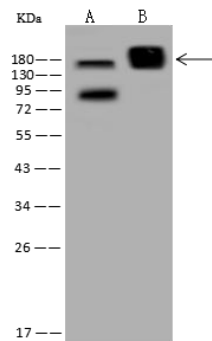
Please Note: Optimal concentrations/dilutions should be determined by the end user.

LIFR Antibody, Rabbit PAb, Antigen Affinity Purified



Sino Biological
Biological Solution Specialist

Catalog Number: 50423-T48



Anti-LIFR rabbit polyclonal antibody at 1:500 dilution

Lane A: HeLa Whole Cell Lysate

Lane B: Mouse liver tissue lysate

Lysates/proteins at 30 µg per lane.

Secondary

Goat Anti-Rabbit IgG (H+L)/HRP at 1/10000 dilution.

Developed using the ECL technique.

Performed under reducing conditions.

Predicted band size: 124 kDa

(We are unsure as to the identity of these extra bands.)