

Mouse EGF / Epidermal Growth Factor Protein (Fc Tag)

Catalog Number: 50482-M01H



Sino Biological
Biological Solution Specialist

General Information

Gene Name Synonym:

AI790464

Protein Construction:

A DNA sequence encoding the mature form of mouse EGF (P01132) (Asn 977-Arg 1029) was fused with the Fc region of human IgG1 at the N-terminus.

Source: Mouse

Expression Host: HEK293 Cells

QC Testing

Purity: > (67.3+30.0) % as determined by SDS-PAGE

Bio Activity:

Measured in a cell proliferation assay using Balb/3T3 mouse embryonic fibroblasts. The ED₅₀ for this effect is typically 0.5-3 ng/mL.

Endotoxin:

< 1.0 EU per µg of the protein as determined by the LAL method

Stability:

Samples are stable for up to twelve months from date of receipt at -70 °C

Predicted N terminal: Glu

Molecular Mass:

The recombinant mouse EGF/Fc is a disulfide-linked homodimeric protein. The reduced monomer consists of 314 amino acids and has a predicted molecular mass of 34.5 kDa. In SDS-PAGE under reducing conditions, the apparent molecular mass of the protein is approximately 44 and 38 kDa.

Formulation:

Lyophilized from sterile PBS, pH 7.4

Normally 5 % - 8 % trehalose, mannitol and 0.01% Tween80 are added as protectants before lyophilization. Specific concentrations are included in the hardcopy of COA. Please contact us for any concerns or special requirements.

Usage Guide

Storage:

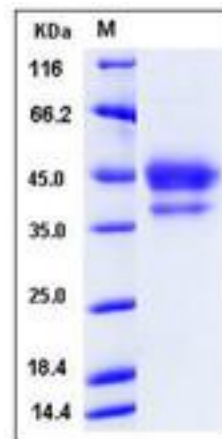
Store it under sterile conditions at -20°C to -80°C upon receiving. Recommend to aliquot the protein into smaller quantities for optimal storage.

Avoid repeated freeze-thaw cycles.

Reconstitution:

Detailed reconstitution instructions are sent along with the products.

SDS-PAGE:



Protein Description

EGF is the founding member of the EGF-family of proteins. Members of this protein family have highly similar structural and functional characteristics. EGF contains 9 EGF-like domains and 9 LDL-receptor class B repeats. Human EGF is a 6045-Da protein with 53 amino acid residues and three intramolecular disulfide bonds. As a low-molecular-weight polypeptide, EGF was first purified from the mouse submandibular gland, but since then it was found in many human tissues including submandibular gland, parotid gland. It can also be found in human platelets, macrophages, urine, saliva, milk, and plasma. EGF is a growth factor that stimulates the growth of various epidermal and epithelial tissues in vivo and in vitro and of some fibroblasts in cell culture. It results in cellular proliferation, differentiation, and survival. Salivary EGF, which seems also regulated by dietary inorganic iodine, also plays an important physiological role in the maintenance of oro-esophageal and gastric tissue integrity. EGF acts by binding with high affinity to epidermal growth factor receptor on the cell surface and stimulating the intrinsic protein-tyrosine kinase activity of the receptor. The tyrosine kinase activity, in turn, initiates a signal transduction cascade that results in a variety of biochemical changes within the cell - a rise in intracellular calcium levels, increased glycolysis and protein synthesis, and increases in the expression of certain genes including the gene for EGFR - that ultimately lead to DNA synthesis and cell proliferation.

References

- 1.Chen JX, *et al.* (2011) Involvement of c-Src/STAT3 signal in EGF-induced proliferation of rat spermatogonial stem cells. *Mol Cell Biochem.* 358(1-2):67-73.
- 2.Guo Y, *et al.* (2012) Correlations among ERCC1, XPB, UBE2I, EGF, TAL2 and ILF3 revealed by gene signatures of histological subtypes of patients with epithelial ovarian cancer. *Oncol Rep.* 27(1):286-92.
- 3.Kim S, *et al.* (2012) Smad7 acts as a negative regulator of the epidermal growth factor (EGF) signaling pathway in breast cancer cells. *Cancer Lett.* 314(2):147-54.

Manufactured By Sino Biological Inc., FOR RESEARCH USE ONLY. NOT FOR USE IN HUMANS.

For US Customer: Fax: 267-657-0217 • Tel: 215-583-7898

Global Customer: Fax :+86-10-5862-8288 • Tel:+86-400-890-9989 • <http://www.sinobiological.com>