

# Mouse Resistin / ADSF / RETN Protein (Fc Tag)

Catalog Number: 50488-M01H



Sino Biological  
Biological Solution Specialist

## General Information

### Gene Name Synonym:

ADSF; Fizz3; Rstn; Xcp4

### Protein Construction:

A DNA sequence encoding the mouse RETN (Q99P87) (Ser 21-Ser 114) was fused with the Fc region of human IgG1 at the N-terminus.

**Source:** Mouse

**Expression Host:** HEK293 Cells

## QC Testing

**Purity:** > 80 % as determined by SDS-PAGE

### Endotoxin:

< 1.0 EU per µg of the protein as determined by the LAL method

### Stability:

Samples are stable for up to twelve months from date of receipt at -70 °C

**Predicted N terminal:** Glu

### Molecular Mass:

The recombinant mouse RETN/Fc is a disulfide-linked homodimer. The reduced monomer comprises 354 amino acids and has a calculated molecular mass of 38.6 kDa. The apparent molecular mass of the monomer is approximately 40 kDa in SDS-PAGE under reducing conditions.

### Formulation:

Lyophilized from sterile PBS, pH 7.4

Normally 5 % - 8 % trehalose, mannitol and 0.01% Tween80 are added as protectants before lyophilization. Specific concentrations are included in the hardcopy of COA. Please contact us for any concerns or special requirements.

## Usage Guide

### Storage:

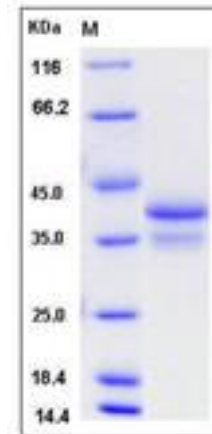
Store it under sterile conditions at -20°C to -80°C upon receiving. Recommend to aliquot the protein into smaller quantities for optimal storage.

**Avoid repeated freeze-thaw cycles.**

### Reconstitution:

Detailed reconstitution instructions are sent along with the products.

## SDS-PAGE:



## References

1. Verma S, *et al.* (2003) Resistin promotes endothelial cell activation: further evidence of adipokine-endothelial interaction. *Circulation*. 108(6):736-40.
2. Reilly MP, *et al.* (2005) Resistin is an inflammatory marker of atherosclerosis in humans. *Circulation*. 111(7):932-9.
3. Stepan CM, *et al.* (2002) Resistin and obesity-associated insulin resistance. *Trends Endocrinol Metab*. 13(1):18-23.

Manufactured By Sino Biological Inc., FOR RESEARCH USE ONLY. NOT FOR USE IN HUMANS.

For US Customer: Fax: 267-657-0217 • Tel: 215-583-7898

Global Customer: Fax :+86-10-5862-8288 • Tel:+86-400-890-9989 • <http://www.sinobiological.com>